



**FLITWICK TOWN COUNCIL**  
**Draft Minutes of the Community Services Committee meeting**  
**held on Tuesday 3<sup>rd</sup> February 2026 at the Rufus Centre**

Present:

Cllr Thomsson  
Cllr Earles  
Cllr Wilsmore  
Cllr Bandy  
Cllr Crawford  
Cllr Harald  
Cllr Toinko  
Cllr Roberts

Stacie Lockey – Town Clerk & Chief Executive  
Lisa Simpson – Community Engagement Manager  
Sarah Burgess – Amenities Officer  
Aaron Pepper – Public Realm Supervisor

**1341. APOLOGIES FOR ABSENCE**

Apologies were received and accepted from Cllr Platt – work commitment.

**1342. DECLARATIONS OF INTEREST**

To receive Statutory Declarations of Interests from Members in relation to:

- (a) Disclosable Pecuniary interests in any agenda item – none.
- (b) Non-Pecuniary interests in any agenda item – none.

**1343. CHAIRMAN'S ANNOUNCEMENTS**

The Chairman reminded Members that the launch of the Flitwick Living History Trail was being held on Thursday, 5<sup>th</sup> February for those who wished to attend.

Members were advised that the first meeting had taken place with Ampthill Town Council to start arranging the Pride Picnic. This would be taking place on Saturday, 7<sup>th</sup> June, and any help would be appreciated.

**1344. PUBLIC OPEN SESSION**

There was no invited speaker.

**1345. INVITED SPEAKER**

No invited speaker.

**1346. MEMBERS QUESTIONS**

Cllr Toinko commented that the Town Council's proposed film during the February half term

clashed with the Library and asked if Officers could work with the Library going forward to avoid this happening in the future.

*Action: CEM*

The Chairman asked Officers if an email had been circulated asking for feedback from the Christmas Lights Event, as they did not recall seeing this. Officers agreed to look into this.

*Action: CEM*

#### **1347. MINUTES**

- a. For Members to receive and adopt the minutes of the Community Services meeting held on **Tuesday 2<sup>nd</sup> December 2025**.

It was **RESOLVED** to adopt the minutes of the Community Services Meeting held on Tuesday 2<sup>nd</sup> December 2025 as an accurate record of the meeting.

#### **1348. MATTERS ARISING**

There were no matters arising.

#### **1349. ITEMS FOR CONSIDERATION**

##### **a. Community Engagement Strategy**

Members commented positively on the Community Engagement Strategy. The Town Mayor commented that there was an event listed within the document that clashed with the Town Mayor's event diary, Officers agreed to liaise directly with the Town Mayor on this matter.

*Action: CEM*

It was **RECOMMENDED** to approve the Community Strategy and take it to full council for adoption.

##### **b. Community Events Additional Expenditure**

Members discussed the report presented and discussed the options at length.

Cllr Harald asked if the family fun day was supported by local businesses, and Officers advised that this was supported through sponsorship.

Members were reminded that last year the fun fair was not provided free of charge, and minimal complaints or negative feedback were received as a result of this.

Members commented on the option which included boxing sessions, and felt the costs were very high. A suggestion was made to contact local professional boxer Linus Udofia to ask for his support, given that he runs a local boxing club in Flitwick.

A Member commented that last year, the fun fair rides for younger children had been removed and felt the event didn't accommodate all ages. The Town Clerk advised that this was not the case and there were at least 3-4 rides suitable for younger children aged between 2-8 years. Members did comment that the main change from previous years was the removal of the traditional fun fair rides.

Another Member felt that there should have been a further option within the report to include not spending the additional budget at all. The Chairman advised that this could be an option, and should Members choose not to use the money, it would be returned to the general reserves fund.

Members asked if the family fun day would include soft play in the village hall again this year as it provided refuge for younger children to escape the sun. The Community Engagement Manager advised that this was being investigated.

Members asked for clarity on how much the fun fair would cost if the additional budget was not utilised for the fun fair. The Town Clerk advised that the charge would be £1.50 per ride as per last year.

Members discussed looking at all larger events in detail to see if any savings could be made elsewhere to be able to fully subsidise the fair and provide an enhanced summer programme. Concerns were raised around the amount of money that had been set aside for the Festival of Lights, and some Members felt unsure what this event involved.

The Chairman commented that if no decision could be reached, the item would be deferred; however, there was a risk associated with this regarding the fun fair.

The Town Clerk asked for clarity on what was being asked for by Officers; some Members were concerned about no decision being made.

The Chairman was in favour of being able to control the fun fair prices and was keen to progress with option two. They felt that a report could still be prepared for the next meeting with further details around the events, in particular, the larger events.

It was **RESOLVED** to accept option two and utilise the additional £5,650.00 money for an all-ages inclusive summer programme.

Officers were tasked with preparing a report and bringing it to the next meeting to include a list of all events, budgets associated with them and an opportunity for Members to consider these further.

**c. Play Areas – Forward Capital Plan and Updates**

Members noted the report and raised a query regarding the replacement of potentially damaged sections of the Matta play surfacing recently installed at two play areas. The Amenities Officer advised that individual tiles could be replaced by the Public Realm Team, making this a more cost-effective long-term solution. Members also commented that the material used was of improved quality.

Members asked how future improvements would be funded. The Town Clerk advised that this would be via external funding sources, Section 106 or the Town Council's projects fund.

**d. Land Hire Request from Kings Church**

Members discussed the request from Kings Church for use of the Town Square for their annual carol service.

It was **RESOLVED** to approve the request from Kings Church to hold their 2026 carol concert on the Town Square.

**1350. ITEMS FOR INFORMATION**

**a. Community Financial Report**

Members noted the financial report.

**b. Officer Update**

(i) Amenities Update

- Members commented that previously, the bins were an issue, whereby members of the public were putting large pizza boxes in them, causing them to be blocked. The Amenities Officer advised that the bins had been replaced with dual bins, including a section for general waste and also recycling. It was hoped this would improve the situation.
- The Manor Park Working group were making good progress within the park and

continued to meet on the first Thursday of each month. All Members were welcome to attend.

(ii) Community Update

- Members asked for Officers to contact the Library regarding the film showings to avoid potential clashes in the future.

**1351. PUBLIC OPEN SESSION**

No items.

**1352. EXEMPT ITEMS**

The following resolution will be **moved** that is advisable in the public interest that the public and press are excluded whilst the following exempt item issue is discussed.

No items.

Pursuant to section 1(2) of the public bodies (Admission to Meetings) Act 1960 Council **resolve** to exclude the public and press by reason of the confidential nature of the business about to be transacted.

Meeting Closed at 20.439

Signed.....(Chairman)



Flitwick Town Council

## FLITWICK TOWN COUNCIL

### Youth Provision – Review and Future Delivery

#### Executive Summary

Flitwick Town Council commissions youth provision as a discretionary community service. A review of the current arrangements confirms that the service is stable and valued; however, further development is required to strengthen monitoring, formalise measurable outcomes and demonstrate value for money.

This report proposes a structured optimisation phase during 2026, followed by a staged approach to future delivery.

Phase 1 would involve a revised contract under a strengthened specification – which aligns delivery objectives with Central Bedfordshire's reporting framework and develop a refreshed Youth strategy for Flitwick. Alignment with CBC will enable clearer demonstration of partnership outcomes and strengthen the councils' positions when seeking funding, collaboration and support.

Phase 2 would consider longer-term delivery options, informed by evidence performance and return on investment.

#### 1. Background & current Delivery

Since April 2023, the Council has commissioned youth provision delivering weekly HUB sessions, school-based mentoring and holiday activities. Delivery operates across approximately 28 staff hours per week for 50 weeks per year at an annual cost of £52,250. The current provider is on contract until 31<sup>st</sup> August 2026.

Participation levels vary across the year due to seasonal and academic factors. The service provides a consistent community-based offer; however, improvements are required to strengthen measurable evidence of impact.

As youth provision is not a statutory responsibility of the Council, it is important that the service demonstrates clear community benefit, efficient use of resources and measurable impact.

#### 2. Review Findings

A review of delivery and governance arrangements has identified that while engagement is consistent, the service requires stronger performance measurement and clearer alignment with wider partnership frameworks.

Improvements are required to:

- Monitor attendance, retention and progression more effectively.
- Define measurable outcome benchmarks.

- Strengthen safeguarding and reporting processes.
- Align contract objectives with a structured monitoring and evaluation framework.

Closer alignment with Central Bedfordshire Council's emerging reporting and outcome framework is necessary. This alignment will:

- Demonstrate shared partnership outcomes.
- Enable consistent reporting across agencies.
- Provide robust evidence of impact.
- Support future funding discussions and external support opportunities.

Without this alignment, the Council cannot fully evidence the wider contribution of its youth provision within the local partnership landscape.

### **3. Phase 1 – Optimisation & Strategy development**

During 2026, the Council will implement a structured optimisation phase to strengthen delivery and embed a consistent performance framework. (This would be a contract extension/one year contract duration till 31<sup>st</sup> March 2027)

This phase will include:

- Introduction of a digital registration and attendance tracking system.
- Structured monitoring of retention and progression.
- Refinement of safeguarding and governance processes.
- Formal alignment of contract objectives with Central Bedfordshire's reporting framework.
- Development of measurable performance indicators linked to partnership outcomes.
- Preparation of a refreshed Youth Strategy for Flitwick.

The new Youth Strategy will define:

- The Council's objectives for youth provision.
- Expected outcomes and success measures.
- Alignment with Central Bedfordshire priorities.
- The intended delivery structure from 2027 onward.

This work will provide a clear evidence base to assess return on investment and ensure the service contributes meaningfully to wider local outcomes.

### **4. Phase 2 – Strategic Decision on Future Delivery (Autumn 2026)**

In autumn 2026, Council will review the evidence gathered during Phase 1 alongside the new Youth Strategy.

The decision on the future delivery model will consider:

- Demonstrable outcomes achieved under the strengthened framework.
- Evidence of partnership alignment and shared outcomes.
- Cost-effectiveness and return on investment.
- The ability of the model to attract funding and external support.

Council will determine whether to:

- Continue under a revised contract arrangement.
- Adopt a Hybrid delivery model; or

- Proceed to full external procurement.

## **5. Implementation Timeline**

To ensure implementation of the agreed model in from April 2027, the following timetable is proposed:

### **Throughout 2026**

Optimisation phase, alignment with Central Bedfordshire reporting framework and development of new Youth Strategy.

### **Autumn 2026 (September)**

Council decision on preferred delivery model and approval of final specification.

### **Autumn/Winter 2026 (if procurement required)**

Compliant procurement process of approximately four to six months, including mobilisation.

### **April 2027**

Commencement of the agreed delivery model under the refreshed Youth Strategy and aligned reporting framework.

## **6. Conclusion**

The current youth provision remains operationally stable; however, to ensure long-term effectiveness and access to partnership funding and support, the service must align with Central Bedfordshire's reporting framework and demonstrate measurable outcomes.

The proposed phased approach enables the Council to strengthen delivery during 2026, formalise strategic objectives and implement a delivery model in 2027 that is aligned, accountable and cost-effective.

## **7. Recommendations**

It is recommended that Council:

1. Approve continuation of current youth provision during the 2026 optimisation and alignment phase from August 2026 – March 2027, the budget for this duration already agreed)
2. Approve formal alignment of the service specification and reporting arrangements with Central Bedfordshire's framework to demonstrate partnership outcomes and support funding opportunities.
3. Officers to create a Youth strategy for consideration by the council.

Appendix A – Monitoring and Evaluation Framework



## Flitwick Town Council

### Community Events and Activities

#### 1. Purpose

At the Community Services meeting in February, Officers were asked to prepare a report with details of all events and activities. This report provides Members with a strategic overview of the Community Events Programme and demonstrate how delivery supports the Council's Community Strategy priorities and wider community engagement objectives and budgets associated with these activities' events.

**Appendix A:** The Summer Programme

**Appendix B:** Events programme 2026

#### 2. Strategic Context

The Community Events Programme is a key mechanism for delivering the Council's Community Strategy. Through targeted, inclusive and partnership-led activity, the programme supports community cohesion, wellbeing, and civic participation.

As part of the Community Engagement function, the programme is designed not only to deliver events, but to:

- Strengthen relationships with residents and community groups
- Increase participation from underrepresented communities
- Support vulnerable residents through accessible provision
- Build sustainable partnerships across the voluntary and statutory sectors
- Enhance community pride and local identity

#### 3. Contribution to Community Strategy Priorities

The programme contributes to the Council's strategic ambitions by:

- **Strengthening Community Cohesion**
  - Events provide accessible spaces for residents to connect, fostering belonging and reducing isolation.
- **Improving Health and Wellbeing**
  - Activity-based events and health initiatives promote positive lifestyles and early engagement with support services.
- **Supporting Children and Young People**
  - Structured activities create safe, positive opportunities that build confidence, skills and social networks.
- **Promoting Inclusion**
  - Free or low-cost provision ensures accessibility, particularly for residents affected by financial pressures or social barriers.
- **Encouraging Civic Participation**
  - Community events create opportunities for volunteering, partnership working and resident involvement in local initiatives.

#### 4. Community Events & Activities

The attached appendix documents contain a list of all events and activities, the costs associated with them and details of how they link to the Community Engagement strategy.

## Festival of Light – Community Engagement Proposal 2026

The Community Engagement Strategy includes the themes of Community Engagement and Inclusion and Events, Culture and Heritage – Celebrating Flitwick’s identity, culture and history.

A Festival of Light aligns strongly with these priorities by increasing opportunities for residents to participate in community events, strengthening local identity and providing inclusive, accessible activity.

While the original proposal was to deliver a large-scale outdoor Festival of Light in Winter 2026, this would require a 12-month planning period, including funding, artist commissioning and planning permissions. Due to changes in Central Bedfordshire Council planning procedures and associated delays, it has not been possible to progress the full festival within the required timescales.

It is therefore proposed that the existing £5,000 allocation is used to deliver a scaled pilot Lantern Workshop and procession event in Autumn 2026, linked to the Christmas Lights Switch-On.

Leading up to the event, artist-led lantern workshops will take place during October and November 2026 within the community, including after-school clubs and older people’s facilities. Sessions will be delivered by commissioned artists alongside the Community Team to ensure broad participation across age groups.

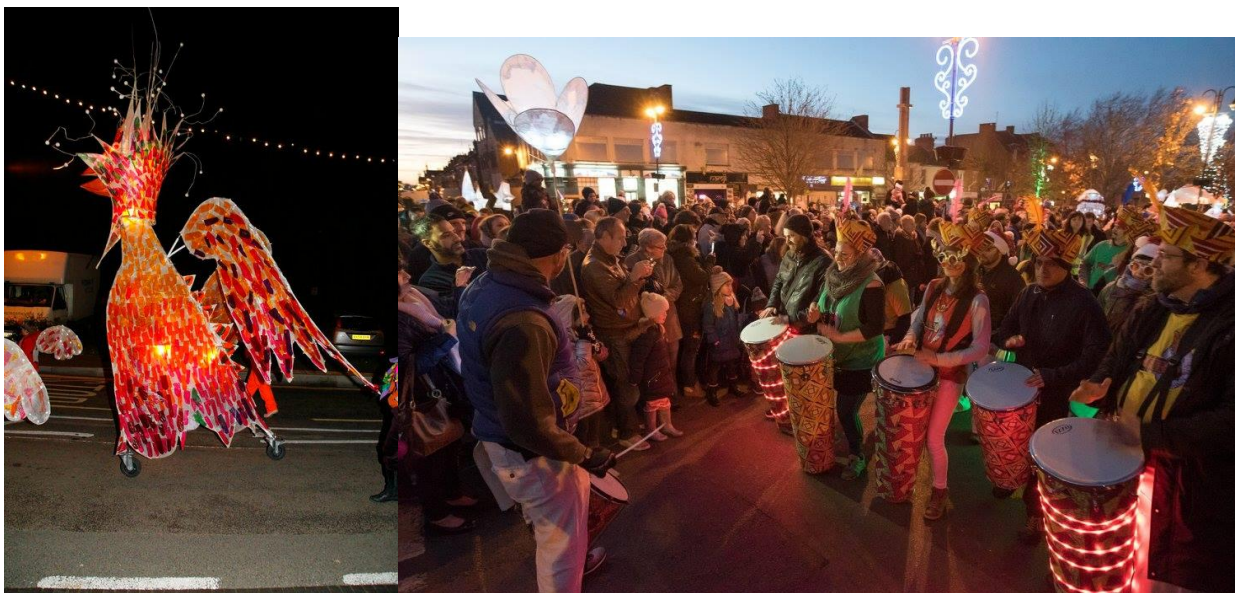
Sue Quinn, Community Officer, brings valuable experience from 21 years as part of the volunteer team delivering the Wolverton Lantern Festival, strengthening local capacity and knowledge in community-led delivery.

Lantern kits will also be made available for residents wishing to participate at home.



The lantern procession will assemble at Hinksley Park and proceed to Station Square for the Christmas Lights Switch-On, supported by a rolling road closure to ensure safety. A feature lantern and live music will lead the parade.

This phased approach will test engagement levels and operational requirements ahead of developing a larger Festival of Light in 2027.



## Evaluation and Recommendation

Participation data and community feedback will be gathered to assess social impact and inform funding applications for 2027.

### **Recommendations**

1. Approve the delivery of the 2026 Lantern Workshops and Procession as a pilot engagement activity in replacement of the proposed Festival of Lights.
2. Not proceed with the Lantern Workshops and Procession (the budget would return to general reserves at the end of the financial year).

Appendix A:

Date	Activity	Time	Number of participants	Age/Who is it Primarily for?	Cost	vat	Strategy
Week One							
20/07/2026	Youth service						CEI
20/07/2026	Play in a week *	9.30 - 12.30pm and 1pm - 3pm	20 per age group	13 year olds.			CEI HWL ECH PV
21/07/2026	Play in a week	9.30am - 12.30pm and 1pm - 3pm		parents not required			
22/07/2026	Play in a week	9.30am - 12.30pm and 1pm - 3pm			£1,655.00	£331.00	
23/07/2026	Play in a week	9.30am - 12.30pm and 1pm - 3pm					
24/07/2026	Play in a week performance	12:00pm) 1:00pm-4:00pm (Final					
Week Two							
27/07/2026	Youth service						CEI
28/07/2026	Movie Day	11a m - 1pm and 2pm - 4pm	Up to 200	Parents and Children. All ages - parent	£10.00		CEI
29/07/2026	Older peoples tea and cinema *	11.30am - 1.30pm	Up to 100	Adults only - older people	£200.00		CEI
30/07/2026	Bug Hotel	10a m - 12pm	75	Parents and children. All ages - parent	£50.00		CEI
Week Three							
03/08/2026	Youth service						CEI
04/08/2026	Circus Skills	11a m - 12.30pm and 12.45 - 2pm	50 per session	Parent and children. 3 upwards - parent	£550.00	£110.00	CEI HWL PV
05/08/2026	Boxing *	10a m - 11am and 11.30 - 12.30pm	15 children per session	Children. Ages 5-10 and 10-16. Parent	£150.00		CEI HWL PV
07/08/2026	Mosaic workshop	10a m - 12.30pm	30 for session	Parents and children. 5 upwards - parent	£100.00		CEI
Week Four							
10/08/2026	Youth service						CEI
11/08/2026	Older peoples tea and cinema *	11.30am - 1.30pm	Up to 100	Adults only - older people	£200.00		CEI
12/08/2026	Dance workshop *	10a m - 11am and 12pm - 1pm	15 per session	Children. Ages 5- 10 and 11 - 16	£150.00		CEI HWL ECH PV
14/08/2026	DJ workshops *	10a m - 12pm and 1pm - 3pm	10 per session	8 - 12 and 12- 16	£500.00	£100.00	CEI HWL ECH PV
Week Five							
17/08/2026	Youth service						CEI
19/08/2026	Boxing *	10a m - 11am and 11.30am - 12.30pm	15 children per session	Children. 5-10 and 10-16 year old. Parent	£150.00		CEI HWL ECH PV
20/08/2026	Dance workshop *	10a m - 11am and 12pm - 1pm	15 per session	Children. Ages 5- 10 and 11 - 16. Parent Supervision			CEI HWL ECH PV
Week Six							
24/08/2026	Youth service						CEI
25/08/2026	Gr affitti workshop *	10a m - 12pm 1pm - 3pm	15 per session	Children 6- 10 and 11- 16	£800.00	£160.00	CEI
26/08/2026	Movie Day	11a m - 1pm and 2pm - 4pm	Up to 200	Parents and children. All ages - parent	£10.00		CEI
28/08/2026	Big Knit	9am - 12pm		Older people			CEI HWL

\*booking fee £1.00 on ticket solve\*

CEI = Community Engagement and Inclusion

HWL = Health Wellbeing and Leisure

ECH= Events Culture Heritage

PV = Partnerships and Volunteering

ES= Environment and Sustainability

£4,525.00    £701.00



## Flitwick Town Council Community Committee Financial Summary 25/26

01 April to 31 January 2026

	YTD Income	Income Budget	+/- EMR Mvts	% Budget Achieved		YTD Expenditure	Expenditure Budget	+/- EMR Mvts	% Budget Spent
Community Amenities	£ 56,451	£ 13,300	£ 10,738	505%		£ 351,049	£ 482,331	£ 18,525	69%
Community Activities	£ 84,713	£ 24,177	£ 55,353	579%		£ 155,250	£ 135,128	£ 26,639	95%
<b>Community Committee</b>	<b>£ 141,164</b>	<b>£ 37,477</b>	<b>£ 66,091</b>	<b>553%</b>		<b>£ 506,299</b>	<b>£ 617,459</b>	<b>£ 45,164</b>	<b>75%</b>

<b>TOLERANCES:</b> spend against budget		
<b>Income</b>	<b>0% to 24%</b>	<b>RED</b>
	<b>25% to 74%</b>	<b>AMBER</b>
	<b>75% to 100%+</b>	<b>GREEN</b>
<b>Expenditure</b>	<b>0% to 74%</b>	<b>GREEN</b>
	<b>75% to 99%</b>	<b>AMBER</b>
	<b>100%</b>	<b>BLACK</b>
	<b>101%+</b>	<b>RED</b>

\*Please note from August 2025 Community Services Committee Reports are split between Community Amenities & Public Realm and Community Activities to mirror operations and organisation management structures.

## Community Services Summary 25/26

		01-31 January 26	
		Income	Expenditure
4001/300, 4002/300, 4037/300	<b>Staff Costs</b>		£ 27,858
4005/300, 4006/300, 4008/300, 4063/300	<b>Vehicle/Truck Costs</b>		£ 900
4064/300, 4103/300	<b>Other Costs</b> (CCTV & Internal Hire)		£ 1,936
1004/301, 1013/301, 4015/301, 4068/301	<b>Burial Grounds</b> (301)	£ 2,899	£ 241
1005/302, 4015/302, 4072/302, 4088/302, 4103/302	<b>Allotments</b> (302)	£ 2,579	£ -
1014/302, 1070/303, 1177/303, 4013/303, 4015/303, 4078/303, 4084/303, 4085/303, 4110/303, 4128/303, 4132/303, 4137/303, 4140/303, 4700/303, 4701/303, 4702/303	<b>Local Amenities &amp; Tractor Store</b> (303)	£ 2,940	£ 1,825
1012/305, 4075/305, 4098/305, 4122/305	<b>Play Areas / Millennium Park</b> (305)	£ 8,060	£ 2,859
4096/306, 4097/306	<b>Street Lighting</b>		£ 2,226
		£ 16,478	£ 35,619

2025/26 Year to date							
Income	Budget	+/- EMR Mvts	% Budget Achieved	Expenditure	Budget	+/- EMR Mvts	% Budget Spent
				£ 273,346	£ 407,572		67%
				£ 13,776	£ 17,850		77%
				£ 2,566	£ 5,300		48%
£ 21,104	£ 6,000	£ -	352%	£ 3,295	£ 650		507%
£ 4,633	£ 4,500	£ -	103%	£ 4,857	£ 2,350	£ 1,718	134%
£ 21,266	£ 1,100	£ 10,738	957%	£ 30,475	£ 29,730	£ 6,813	80%
£ 9,447	£ 1,700	£ -	556%	£ 16,572	£ 9,300	£ 9,994	71%
				£ 6,163	£ 9,609		64%
£ 56,450	£ 13,300	£ 10,738		£ 344,887	£ 472,752	£ 18,525	

## Community Services Narrative

<b>Apr-25</b>	Public Realm Casual Staff	4037/300	Casual Public Realm team member in place to cover staff shortages.
	Allotments Portalos	4088/302	Spending for Allotment Portalos directly from Allotments Earmarked Reserve (EMR 324) as per Council Resolution, negating any overspend.
	Public Realm Equipment	4084/303	Spending for supply and fit of Flail (£4,650) from Nature Park Annual Grant Earmarked Reserve (EMR 317) as per Council Resolution, negating any overspend.
<b>May-25</b>	Play Areas Repairs and Maint.	4075/305	Spending for Hinksley Music Park (£9,994) directly from Hinksley Music Park Earmarked Reserve (EMR 323) as per Council Resolution, negating any overspend.
<b>Jun-25</b>	Local Amenities	1177/303	Income from donations from STOP Campaign (£1,199.32)
<b>Jul-25</b>	Burial Grounds Costs	4068/301	Increase spending to be matched to income exceeding budgets (1004/301), negating any overspend.
	Public Realm Costs	4133/303	Section 106 grant funding for Public Realm resurfacing outside Station Road buildings received. To be matched to costs for works paid from 4133/303 when works are completed.
	Nature Park	4702/303	Spend for Draft Management Plan (£750) taken from Nature Park Annual Grant (EMR 317) negating any overspend.
<b>Aug-25</b>	Tractor Store Building Maintenance	4132/303	Essential works for Tractor Store movements completed including Builders Clean (£595) and Skip Hire (£400) in August 25
<b>Oct-25</b>	Uniform Costs	4002/300	Essential safety uniform for Public Realm Team
	Allotments Water Charges	4015/302	Charges incurred for historic usage following supplier review of metered supply.
<b>Nov-25</b>	Changing Rooms Hinksley Rd	4122/305	Business rates and electric charges only has resulted in overspend due to increased supplier costs

## Community Activities & Events Summary 25/26

		01-31 January 2026	
		Income	Expenditure
1148/310, 1177/310, 1191/310 4003/310, 4005/310, 4008/310, 4012/310, 4071/310, 4102/310, 4103/310, 4619/310	<b>Food Hub</b> <i>(including Van Costs)</i>	£ 5	£ 736
1181/312 4606/312	<b>Cost Of Living (312)</b>	£ -	£ -
1041/311, 4049/311	<b>Youth Activities</b>	£ -	£ -
1035/311, 4013/311, 4015/311, 4016/311, 4082/311, 4128/311, 4132/311, 4134/311, 4138/311, 4140/311, 4151/311	<b>Youth Hub</b>	-£ 120	£ 616
1177/312 4617/312	<b>Flitwick Heritage (312)</b>	£ -	£ 326
1032/312, 1036/312, 1120/312, 1147/312 4103/312, 4554/312, 4558/312, 4613/312, 4614/312, 4625/312	<b>Community Activities (312)</b>	£ 386	£ 598
1127/313, 1142/313, 1165/313, 1169/313 4043/313, 4200/313, 4204/313, 4211/313, 4213/313, 4540/313, 4551/313, 4618/313	<b>Community Events (313)</b>	£ -	£ 2,795
		£ 271	£ 5,071

2025/26 Year to date							
Income	Budget	+/- EMR Mvts	% Budget Achieved	Expenditure	Budget	+/- EMR Mvts	% Budget Spent
£ 44,774	£ 192	£ 26,583	9474%	£ 26,982	£ 3,096	£ 8,059	611%
£ -	£ -		n/a	£ 1,262	£ 500	£ 762	100%
£ 15,000	£ 15,000	£ 15,000	0%	£ 52,250	£ 52,250		100%
£ 1,103	£ 1,000		110%	£ 8,504	£ 15,786		54%
£ 13,770	£ -	£ 13,770	0%	£ 17,693	£ -	£ 17,693	0%
£ 2,291	£ 3,200		72%	£ 7,266	£ 16,030		45%
£ 7,775	£ 4,785		162%	£ 41,293	£ 47,466	£ 125	87%
£ 84,713	£ 24,177	£ 55,353		£ 155,250	£ 135,128	£ 26,639	

**Community Activity Narrative**

<b>Apr-25</b>	Food Hub Van Costs	4005/310 4008/310 4012/310	Purchase and costs relating to Food Hub Van offset by funding received from TM Charities (1177/310) negating any overspend. Ongoing running costs for the van (fuel etc) are included in revenue budgets for cost centre 310.
	Flitwick Living History	4617/312	Spending for Flitwick Living History Project for costs relating to drop in sessions (£40) and Otter AI Subscription (£78) directly from dedicated Earmarked Reserve (EMR 321) and grant funding.
	Easter Egg Trail	4211/313	Spending on Easter Egg Trail fully grant funded (1142/313) negating any overspend.
<b>May-25</b>	Food Hub FTC Internal Hire	4103/310	No budget set for FTC internal Hire for Food Hub related meetings. To be review for 26/27 budgets
	General Community Fridge Costs	4619/310	Spending for Replacement Display Fridge (£1,250), new trolley (£68) and Whiteboard (£71) from Cost of Living earmarked reserve (EMR 330) negating any overspend
<b>Jun-25</b>	Cost of Living	4606/312	Spending relating to purchase of Freezer for Community Fridge (£1,099.98) from EMR 330 negating any overspend.
<b>Jul-25</b>	Food Hub	4012/310	Spend for EV Charger purchase and installation (£1,279)

FTC Projects Review 2025-26

	PROJECT Details				Project Details									24/25 FUNDING Details				Comments		
	Project Code	N/C	Project Description	Committee	Minute Ref	Project Start Date	Whole Project Funds Committed	Previous Year's Project Spend	25/26 Opening Project Balance	GRANT Received	25/26 Project Spend to Date	Overspend Funded by CPF/Ops Reserve	Underspend Returned to CPF	Project Commitment Remaining YTD		TOTAL Approved Grants/ Funding	Prev Yrs Funds Received		25/26 Funds Received	Grants/ Funding Budget Remaining
Ongoing Projects	800	4212 110	Proj - Nature Park	Community	Del. Auth	Apr-21	£ 3,000	£ 13,490	£ -	£ -	£ -			£ -	0%	£ 283,385	£ 10,490	£ -	£ 272,895	S106 remaining: Phase 1 £7,106.89, Phase 2 £274,728 & Plans £1,550 (CBC to be invoiced for S106 once works completed). Sl 7/9/22. Planning Consultant RCF approved July 23. Jan 25 : CPF Fund & 24/25 Grant Instal complete. Outstanding approved grant fund (£272,895) not yet claimed. No further CPF spend committed. £10,490 received on FTC8584 June 2024.
	801	4819 110	Proj - Flitwick Town Sq Defib	Community	5213d	Feb-22	£ 1,770	£ 1,048	£ 722	£ -	£ 292			£ 430	24%					Defib Purchased and installed March 2024. Further costs anticipated due to possible relocation fees.
	803	4837 110	Proj - Rural Match Fund Benches	Community	5226e	Mar-22	£ 2,000	£ -	£ 2,000	£ -	£ -			£ 2,000	100%					Resolution made at Council March 2022 confirmed March 2023 to be match funded by CBC - amount TBC
	808	4853 110	Proj - Nature Park Planning	Community	5622c	Apr-24	£ 23,673	£ 21,859	£ 1,814	£ -	£ 1,814			£ -	0%					PROJECT COMPLETED & CLOSED - Oct 25
	814	4859 110	Proj - Skate Park Extension	Community	5681gii	Jul-24	£ 9,600	£ 9,600	£ 36,100	£ -	£ 36,100			£ -	0%	£ 64,900	£ 64,900	£ -	£ -	£38,400 match funding from CBC UKSPF Community Grant £26,500 from CBC S106 Funding PROJECT COMPLETED & CLOSED - June 25
	817	4862 110	Proj - Public Realm Improvements	Community	Del Auth	Jul-25	£ -		£ -	£ 66,060	£ 66,060			£ -	0%	£ 54,060	£ 12,000	£ 66,060	£ 66,060	Refurbishment works to Tractor Store and Play Areas (Fir Tree Close Park & Station Rd Park) funded by: £54,059.80 CBC S106 invoice FTC9193 £12,000 Ops Reserves EMR 319 transfer (Journal 4263). PROJECT COMPLETED & CLOSED - Dec 25
	820	4865 110	Proj - Manor Park Carriageway	Community	5934h	Dec-25	£ -		£ -	£ 16,250			£ 16,250	0%			£ 16,250	£ 16,250	Funded by £16,250 from Ops Reserves EMR 319 transfer (Journal 4463).	

## Detailed Income &amp; Expenditure by Budget Heading 31/01/2026

Month No: 10

## Committee Report

	Actual Current Mth	Actual Year To Date	Current Annual Bud	Variance Annual Total	Committed Expenditure	Funds Available	% Spent	Transfer to/from EMR
<b>COMMUNITY Amenities &amp; PublicR</b>								
<b>300 CORE SERVICES</b>								
4001 Salaries & Wages	27,858	269,022	403,343	134,321		134,321	66.7%	
4002 Uniform	0	725	600	(125)		(125)	120.8%	
4005 Vehicle/Trucks Maintenance	0	678	750	72		72	90.4%	
4006 Fuel	168	2,554	5,000	2,446		2,446	51.1%	
4008 Vehicle/Trucks Insurance	0	3,221	3,200	(21)		(21)	100.7%	
4037 PublicR Contractor Costs	0	3,599	3,599	(0)		(0)	100.0%	
4063 Vehicle/Truck Lease Repayments	732	7,323	8,900	1,577		1,577	82.3%	
4064 Town Centre CCTV	1,856	1,916	2,800	884		884	68.4%	
4103 FTC Internal Hire	80	650	2,500	1,850		1,850	26.0%	
<b>CORE SERVICES :- Indirect Expenditure</b>	<b>30,694</b>	<b>289,688</b>	<b>430,692</b>	<b>141,004</b>	<b>0</b>	<b>141,004</b>	<b>67.3%</b>	<b>0</b>
<b>Net Expenditure</b>	<b>(30,694)</b>	<b>(289,688)</b>	<b>(430,692)</b>	<b>(141,004)</b>				
<b>301 BURIAL GROUNDS</b>								
1004 Burial Grounds Income	2,899	20,104	5,000	(15,104)			402.1%	
1013 CBC-Closed Burial Ground	0	1,000	1,000	0			100.0%	
<b>BURIAL GROUNDS :- Income</b>	<b>2,899</b>	<b>21,104</b>	<b>6,000</b>	<b>(15,104)</b>			<b>351.7%</b>	<b>0</b>
4015 Utility - Water	0	99	150	51		51	66.3%	
4068 Burial Ground	241	3,195	500	(2,695)		(2,695)	639.1%	
<b>BURIAL GROUNDS :- Indirect Expenditure</b>	<b>241</b>	<b>3,295</b>	<b>650</b>	<b>(2,645)</b>	<b>0</b>	<b>(2,645)</b>	<b>506.9%</b>	<b>0</b>
<b>Net Income over Expenditure</b>	<b>2,658</b>	<b>17,810</b>	<b>5,350</b>	<b>(12,460)</b>				
<b>302 ALLOTMENTS</b>								
1005 Allotment Rents	2,579	4,633	4,500	(133)			103.0%	
<b>ALLOTMENTS :- Income</b>	<b>2,579</b>	<b>4,633</b>	<b>4,500</b>	<b>(133)</b>			<b>103.0%</b>	<b>0</b>
4015 Utility - Water	0	2,299	500	(1,799)		(1,799)	459.8%	
4072 Allotments Maintenance	0	646	1,500	854		854	43.1%	
4088 Portaloo Hire	0	1,718	0	(1,718)		(1,718)	0.0%	1,718
4103 FTC Internal Hire	0	194	350	156		156	55.5%	
<b>ALLOTMENTS :- Indirect Expenditure</b>	<b>0</b>	<b>4,857</b>	<b>2,350</b>	<b>(2,507)</b>	<b>0</b>	<b>(2,507)</b>	<b>206.7%</b>	<b>1,718</b>
<b>Net Income over Expenditure</b>	<b>2,579</b>	<b>(223)</b>	<b>2,150</b>	<b>2,373</b>				
6000 plus Transfer from EMR	0	1,718	0	(1,718)				
<b>Movement to/(from) Gen Reserve</b>	<b>2,579</b>	<b>1,494</b>	<b>2,150</b>	<b>656</b>				

10:05

## Detailed Income &amp; Expenditure by Budget Heading 31/01/2026

Month No: 10

## Committee Report

	Actual Current Mth	Actual Year To Date	Current Annual Bud	Variance Annual Total	Committed Expenditure	Funds Available	% Spent	Transfer to/from EMR
<b>303 LOCAL AMENITIES/TRACTOR STORE</b>								
1014 Phone Mast (Station Rd)	0	5,500	1,100	(4,400)			500.0%	
1070 Manor Park (Rural Paymt Agent)	0	888	0	(888)			0.0%	
1177 Grants & Donations Received	2,940	14,878	0	(14,878)			0.0%	10,738
<b>LOCAL AMENITIES/TRACTOR STORE :- Income</b>	<b>2,940</b>	<b>21,266</b>	<b>1,100</b>	<b>(20,166)</b>			<b>1933.3%</b>	<b>10,738</b>
4013 Utility - Electric	74	842	1,000	158		158	84.2%	
4015 Utility - Water	0	0	1,000	1,000		1,000	0.0%	
4078 Planting/Weeding	0	1,477	1,500	23		23	98.5%	
4084 Plant/Equip -PURCHASE	30	7,138	2,000	(5,138)		(5,138)	356.9%	4,650
4085 Plant/Equip- MAINTENANCE	931	2,225	2,500	275		275	89.0%	
4110 Tree Maintenance	446	3,636	4,000	364		364	90.9%	
4128 Waste Disposal	250	4,818	7,000	2,182		2,182	68.8%	
4132 Building Maintenance	14	1,219	1,000	(219)		(219)	121.9%	
4137 Water Dispenser Maintenance	81	81	300	219		219	27.1%	
4140 Maintenance Contracts	0	870	1,430	560		560	60.8%	
4700 Flitwick Manor Park	0	5,682	7,000	1,318		1,318	81.2%	
4701 Flit Valley Maintenance	0	0	500	500		500	0.0%	
4702 Flitwick Nature Park	0	2,486	500	(1,986)		(1,986)	497.2%	2,163
<b>LOCAL AMENITIES/TRACTOR STORE :- Indirect Expenditure</b>	<b>1,825</b>	<b>30,475</b>	<b>29,730</b>	<b>(745)</b>	<b>0</b>	<b>(745)</b>	<b>102.5%</b>	<b>6,813</b>
<b>Net Income over Expenditure</b>	<b>1,115</b>	<b>(9,209)</b>	<b>(28,630)</b>	<b>(19,421)</b>				
6000 plus Transfer from EMR	0	6,813	0	(6,813)				
6001 less Transfer to EMR	0	10,738	0	(10,738)				
<b>Movement to/(from) Gen Reserve</b>	<b>1,115</b>	<b>(13,134)</b>	<b>(28,630)</b>	<b>(15,496)</b>				
<b>305 PLAY AREAS</b>								
1010 Pitch / Field Hire	0	197	0	(197)			0.0%	
1012 Millennium Park Hire	0	1,190	1,700	510			70.0%	
1177 Grants & Donations Received	8,060	8,060	0	(8,060)			0.0%	
<b>PLAY AREAS :- Income</b>	<b>8,060</b>	<b>9,447</b>	<b>1,700</b>	<b>(7,747)</b>			<b>555.7%</b>	<b>0</b>
4075 Play Areas Repairs & Maint.	2,771	15,504	8,000	(7,504)		(7,504)	193.8%	9,994
4098 Skate Park Lighting	54	322	650	328		328	49.5%	
4122 Changing Rooms - Hinksley Rd	34	747	650	(97)		(97)	114.9%	
<b>PLAY AREAS :- Indirect Expenditure</b>	<b>2,859</b>	<b>16,572</b>	<b>9,300</b>	<b>(7,272)</b>	<b>0</b>	<b>(7,272)</b>	<b>178.2%</b>	<b>9,994</b>
<b>Net Income over Expenditure</b>	<b>5,202</b>	<b>(7,125)</b>	<b>(7,600)</b>	<b>(475)</b>				
6000 plus Transfer from EMR	0	9,994	0	(9,994)				
<b>Movement to/(from) Gen Reserve</b>	<b>5,202</b>	<b>2,869</b>	<b>(7,600)</b>	<b>(10,469)</b>				

## Detailed Income &amp; Expenditure by Budget Heading 31/01/2026

Month No: 10

## Committee Report

	Actual Current Mth	Actual Year To Date	Current Annual Bud	Variance Annual Total	Committed Expenditure	Funds Available	% Spent	Transfer to/from EMR
<b>306 STREET LIGHTING</b>								
4096 Electricity - Street Lights	621	4,558	7,609	3,051		3,051	59.9%	
4097 Street Lighting Maintenance	1,605	1,605	2,000	395		395	80.2%	
<b>STREET LIGHTING :- Indirect Expenditure</b>	<b>2,226</b>	<b>6,163</b>	<b>9,609</b>	<b>3,446</b>	<b>0</b>	<b>3,446</b>	<b>64.1%</b>	<b>0</b>
<b>Net Expenditure</b>	<b>(2,226)</b>	<b>(6,163)</b>	<b>(9,609)</b>	<b>(3,446)</b>				
<b>COMMUNITY Amenities &amp; PublicR :- Income</b>	<b>16,478</b>	<b>56,451</b>	<b>13,300</b>	<b>(43,151)</b>			<b>424.4%</b>	
Expenditure	37,846	351,049	482,331	131,282	0	131,282	72.8%	
<b>Net Income over Expenditure</b>	<b>(21,368)</b>	<b>(294,599)</b>	<b>(469,031)</b>	<b>(174,432)</b>				
plus Transfer from EMR	0	18,525	0	(18,525)				
less Transfer to EMR	0	10,738	0	(10,738)				
<b>Movement to/(from) Gen Reserve</b>	<b>(21,368)</b>	<b>(286,812)</b>	<b>(469,031)</b>	<b>(182,219)</b>				
<b>Grand Totals:- Income</b>	<b>16,478</b>	<b>56,451</b>	<b>13,300</b>	<b>(43,151)</b>			<b>424.4%</b>	
Expenditure	37,846	351,049	482,331	131,282	0	131,282	72.8%	
<b>Net Income over Expenditure</b>	<b>(21,368)</b>	<b>(294,599)</b>	<b>(469,031)</b>	<b>(174,432)</b>				
plus Transfer from EMR	0	18,525	0	(18,525)				
less Transfer to EMR	0	10,738	0	(10,738)				
<b>Movement to/(from) Gen Reserve</b>	<b>(21,368)</b>	<b>(286,812)</b>	<b>(469,031)</b>	<b>(182,219)</b>				

	Actual Current Mth	Actual Year To Date	Current Annual Bud	Variance Annual Total	Committed Expenditure	Funds Available	% Spent	Transfer to/from EMR
<b>COMMUNITY Engagement</b>								
<b>310 FOOD HUB</b>								
1148 Comm Fridge Deliveries	0	180	192	12			93.8%	
1177 Grants & Donations Received	0	44,589	0	(44,589)			0.0%	26,583
1191 Miscellaneous Income	5	5	0	(5)			0.0%	
FOOD HUB :- Income	5	44,774	192	(44,582)			23320.0	26,583
4003 Travel Costs	0	184	1,200	1,016		1,016	15.4%	
4005 Vehicle/Trucks Maintenance	0	345	0	(345)		(345)	0.0%	
4008 Vehicle/Trucks Insurance	0	1,463	0	(1,463)		(1,463)	0.0%	1,463
4012 Vehicle/Trucks PURCHASE	0	16,945	0	(16,945)		(16,945)	0.0%	
4071 FUEL - Community Fridge	0	0	400	400		400	0.0%	
4102 FTC Internal Rent	108	1,080	1,296	216		216	83.3%	
4128 Waste Disposal	28	169	0	(169)		(169)	0.0%	
4619 General Community Fridge Costs	600	6,796	200	(6,596)		(6,596)	3397.8%	6,596
FOOD HUB :- Indirect Expenditure	736	26,982	3,096	(23,886)	0	(23,886)	871.5%	8,059
Net Income over Expenditure	(731)	17,792	(2,904)	(20,696)				
6000 plus Transfer from EMR	600	8,059	0	(8,059)				
6001 less Transfer to EMR	0	26,583	0	(26,583)				
Movement to/(from) Gen Reserve	(131)	(732)	(2,904)	(2,172)				
<b>311 THE HUB &amp; YOUTH ACTIVITIES</b>								
1035 Youth Hub Hire	(120)	1,103	1,000	(103)			110.3%	
1041 Youth Activities	0	15,000	15,000	0			100.0%	15,000
THE HUB & YOUTH ACTIVITIES :- Income	(120)	16,103	16,000	(103)			100.6%	15,000
4013 Utility - Electric	289	1,446	1,173	(273)		(273)	123.2%	
4015 Utility - Water	0	224	4,500	4,276		4,276	5.0%	
4016 Business Rates	0	1,921	2,113	192		192	90.9%	
4049 Youth Provision	0	52,250	52,250	0		0	100.0%	
4082 Youth Hub CCTV	0	0	1,000	1,000		1,000	0.0%	
4128 Waste Disposal	28	235	400	165		165	58.6%	
4132 Building Maintenance	167	1,030	1,500	470		470	68.6%	
4134 Cleaning Costs	0	1,233	1,850	617		617	66.6%	
4138 Equipment Purchase	0	311	500	189		189	62.3%	
4140 Maintenance Contracts	90	1,683	2,200	517		517	76.5%	
4151 Broadband Costs	42	422	550	128		128	76.7%	
THE HUB & YOUTH ACTIVITIES :- Indirect Expenditure	616	60,754	68,036	7,282	0	7,282	89.3%	0
Net Income over Expenditure	(736)	(44,651)	(52,036)	(7,385)				
6001 less Transfer to EMR	0	15,000	0	(15,000)				
Movement to/(from) Gen Reserve	(736)	(59,651)	(52,036)	7,615				

	Actual Current Mth	Actual Year To Date	Current Annual Bud	Variance Annual Total	Committed Expenditure	Funds Available	% Spent	Transfer to/from EMR
<b>312 COMMUNITY ACTIVITIES</b>								
1120 Keep Fit / Dance Fitness	386	2,291	3,200	909			71.6%	
1177 Grants & Donations Received	0	13,770	0	(13,770)			0.0%	13,770
COMMUNITY ACTIVITIES :- Income	<u>386</u>	<u>16,061</u>	<u>3,200</u>	<u>(12,861)</u>			<u>501.9%</u>	<u>13,770</u>
4103 FTC Internal Hire	336	5,882	11,500	5,618		5,618	51.1%	
4554 Stitches	0	109	200	91		91	54.4%	
4558 Keep Fit / Dance Fitness	250	1,125	1,850	725		725	60.8%	
4606 Cost of Living Initiative	0	1,262	500	(762)		(762)	252.4%	762
4613 Recycle / Reuse	0	0	130	130		130	0.0%	
4614 Proud AF Initiative	0	30	1,500	1,470		1,470	2.0%	
4617 Flitwick Living History	326	17,693	0	(17,693)		(17,693)	0.0%	17,693
4625 Forget Me Not Group	12	120	850	730		730	14.1%	
COMMUNITY ACTIVITIES :- Indirect Expenditure	<u>924</u>	<u>26,221</u>	<u>16,530</u>	<u>(9,691)</u>	<u>0</u>	<u>(9,691)</u>	<u>158.6%</u>	<u>18,455</u>
Net Income over Expenditure	<u>(538)</u>	<u>(10,160)</u>	<u>(13,330)</u>	<u>(3,170)</u>				
6000 plus Transfer from EMR	326	18,455	0	(18,455)				
6001 less Transfer to EMR	0	13,770	0	(13,770)				
Movement to/(from) Gen Reserve	<u>(212)</u>	<u>(5,475)</u>	<u>(13,330)</u>	<u>(7,855)</u>				
<b>313 COMMUNITY EVENTS</b>								
1127 Flitwick Fun Day	0	6,855	4,500	(2,355)			152.3%	
1142 Easter Egg Trail	0	350	0	(350)			0.0%	
1165 Christmas Lights EVENT	0	570	285	(285)			200.0%	
COMMUNITY EVENTS :- Income	<u>0</u>	<u>7,775</u>	<u>4,785</u>	<u>(2,990)</u>			<u>162.5%</u>	<u>0</u>
4043 Remembrance Event	0	714	890	176		176	80.3%	
4200 Christmas Lights Installation	2,795	19,320	20,475	1,155		1,155	94.4%	
4204 Flitwick TownSq Chrismas Tree	0	1,370	1,500	130		130	91.3%	
4211 Easter Egg Trail	0	350	0	(350)		(350)	0.0%	
4213 Summer Programme	0	1,522	1,400	(122)		(122)	108.7%	125
4540 Christmas Lights EVENT	0	3,669	5,201	1,532		1,532	70.5%	
4551 Flitwick Fun Day	0	14,147	16,000	1,853		1,853	88.4%	
4618 Community General Costs	0	202	2,000	1,798		1,798	10.1%	
COMMUNITY EVENTS :- Indirect Expenditure	<u>2,795</u>	<u>41,293</u>	<u>47,466</u>	<u>6,173</u>	<u>0</u>	<u>6,173</u>	<u>87.0%</u>	<u>125</u>
Net Income over Expenditure	<u>(2,795)</u>	<u>(33,518)</u>	<u>(42,681)</u>	<u>(9,163)</u>				
6000 plus Transfer from EMR	0	125	0	(125)				
Movement to/(from) Gen Reserve	<u>(2,795)</u>	<u>(33,393)</u>	<u>(42,681)</u>	<u>(9,288)</u>				
COMMUNITY Engagement :- Income	271	84,713	24,177	(60,536)			350.4%	
Expenditure	5,070	155,250	135,128	(20,122)	0	(20,122)	114.9%	
Net Income over Expenditure	<u>(4,799)</u>	<u>(70,537)</u>	<u>(110,951)</u>	<u>(40,414)</u>				
plus Transfer from EMR	925	26,639	0	(26,639)				

	Actual Current Mth	Actual Year To Date	Current Annual Bud	Variance Annual Total	Committed Expenditure	Funds Available	% Spent	Transfer to/from EMR
less Transfer to EMR	0	55,353	0	(55,353)				
Movement to/(from) Gen Reserve	<u>(3,874)</u>	<u>(99,252)</u>	<u>(110,951)</u>	<u>(11,699)</u>				
Grand Totals:- Income	271	84,713	24,177	(60,536)			350.4%	
Expenditure	5,070	155,250	135,128	(20,122)	0	(20,122)	114.9%	
Net Income over Expenditure	<u>(4,799)</u>	<u>(70,537)</u>	<u>(110,951)</u>	<u>(40,414)</u>				
plus Transfer from EMR	925	26,639	0	(26,639)				
less Transfer to EMR	0	55,353	0	(55,353)				
Movement to/(from) Gen Reserve	<u>(3,874)</u>	<u>(99,252)</u>	<u>(110,951)</u>	<u>(11,699)</u>				



# Flitwick Town Council

## Community Services Committee – 3<sup>rd</sup> March 2026 Officer Update – Amenities

### 1. Manor Park



The driveway project at Manor Park has been completed and makes such a difference to the appearance of the park, whilst in keeping with its heritage. Focus will now shift to the restoration of the Ornamental Bridge. Funding has been identified for this project, and an expression of interest will be submitted soon.

The regular MPWG volunteers will be back at the park on Thursday morning and continue to make a noticeable difference within the park.

### Volunteer Morning – Sat 7<sup>th</sup> March – All Members invited to attend:



### 2. Millennium Park

New gates at Millennium Park are being installed this week. The work will replace the existing vehicle gate on Temple Way with the addition of a new pedestrian entrance gate adjacent to these. The vehicle entrance in the corner of the park by the Hub car park entrance will be repaired, to allow access from that corner too. These works have been funded by Sec106.

A replacement roundabout has been ordered for Millennium Park Play Area and this will be

installed in the coming months.

### **3. Nature Park**

The Public Realm team visited Wasseldine – a Hazel Coppice in Gravenhurst to learn about managing a hazel coppice. Flitwick Nature Park was planted with 7 coupes of hazel (around 3.5ha) with the intention of coppicing. The first cut could take place as early as this October.

Volunteers will be required to help manage the hazel and coppicing in the future. To attract interest in the subject a 'Walk & Talk' with Guy Lambourne of Wasseldine, will happen in late Spring, at the Nature Park.

### **4. Public Realm Team**

The team have started mowing last week and looking forward to initiating a two-week rotation of cuts across all FTC owned and managed areas. Plants for the Transport Interchange will arrive this week and by the time the next meeting happens the area will be planted out.

Work continues in Manor Park and lots of hedge and tree work across the town has been completed ahead of the Spring and bird-nesting season.

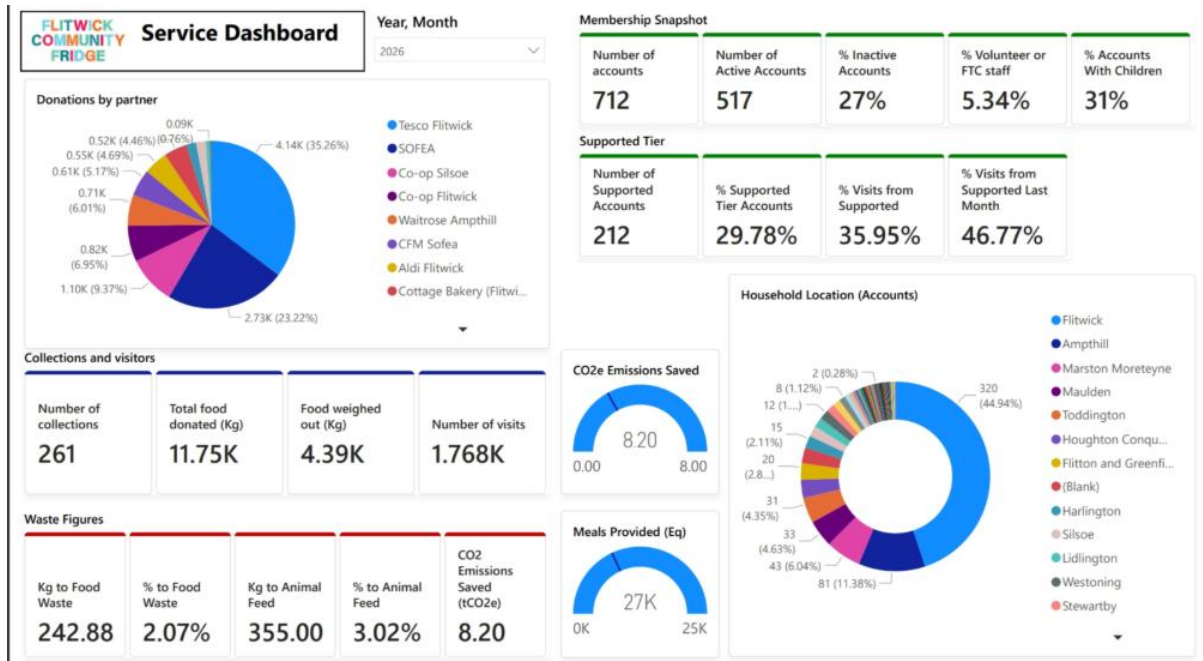


# Flitwick Town Council

Community Services Committee – 3<sup>rd</sup> March 2026

## Officers Update

### 1. Community Fridge February 2026



### Fridge Update

The Community Fridge continues to grow in strength and impact. Collections have increased significantly over the past month, with more frequent pick-ups now taking place from Flitwick and Silsoe Co-ops. We are also delighted that Marston Moretaine Co-op will come online at the end of March following their refurbishment, further strengthening our local partnerships.

With this expansion comes opportunity — and we are now actively recruiting additional volunteers to support our evening collections. A new Facebook campaign has been launched, and we look forward to welcoming new members to our dedicated volunteer team.

Seasonal availability naturally brings a focus on root vegetables at this time of year. An abundance of potatoes has allowed us to offer them outside of the usual weight allowance, providing extra value to visitors. Bread supplies have also increased and, again, are not included within the weight allowance. Surplus bread has been share with the Children’s Centre, ensuring nothing goes to waste and reinforcing our commitment to community collaboration.

The Community Fridge will also be represented at the Food Fairness event at the Rufus Centre on Tuesday 24th February — a fantastic opportunity to showcase the project and engage with residents.

We are especially pleased to announce that a new local company has committed to donating £150 per month, providing valuable ongoing financial support to sustain and strengthen the initiative.

### **Household Support Fund Grant**

Through the Household Support Fund, we are enhancing provision for our supported tier members. Each week we will be stocking essential items including eggs, milk, butter and cheese. Volunteers will collect these on Tuesday evenings to prepare for Wednesday sessions.

Cleaning products and household essentials such as washing powder are also in stock and available to supported members across multiple sessions. This flexible approach ensures accessibility for those unable to attend on Wednesdays.

£15 supermarket vouchers for supported tier members will be distributed on 26th February, providing additional support during challenging times.

In March, we will also be hosting slow cooker cooking sessions in the Stocksfield Room. Participants will receive recipes and ingredients based on available fridge produce — equipping residents with practical skills and helping maximise the food they receive.

### **Flitwick Living History Town Trail**

The launch of the Town Trail was a wonderful celebration of community spirit, with over 70 parents and grandparents attending alongside their children.

Participants proudly received framed certificates from Trinity College, having achieved their 'Discover' Arts Award, promoted by the Arts Council.

“There are parents here who don't normally engage with the school.”  
– Deputy Headteacher, Kingsmoor

This feedback highlights the project's success not only in celebrating local heritage but also in strengthening school and family engagement.

The exhibition is currently on display in the Rufus Centre Foyer, and discussions are underway with the Library to relocate it in the coming weeks to increase visibility and accessibility.



## **Flitwick Living History**

Filming took place on 16th and 17th February with several valued local businesses:

- D and G Shorts
- Flitwick Jewellers
- Lowe-go's
- Cottage Bakery
- Know Risk
- Co-op
- Rufus Centre

The videographer will return for additional location shots in the coming weeks.

A highlight interview featured D and G Shorts as they celebrate their 100th anniversary this year — a remarkable milestone that will be showcased on the FLH website at its formal launch in Spring. Other businesses, including Flitwick Jewellers and Flitwick Tyres, will also be celebrating significant anniversaries next year, further reinforcing Flitwick's rich commercial heritage.

## **Community Events 2026Engagement**

### **Inside Out 2 – 11am**

133 tickets booked | 110 attendees

### **A Minecraft Movie – 2pm**

125 tickets booked | 87 attendees

We were delighted to bring Community Movie Day back to the Rufus Centre. Feedback from attendees was overwhelmingly positive, with many expressing gratitude for the return of this affordable family activity.

An officer was present throughout to oversee check-in and ensure the code of conduct was upheld. We are pleased to report that both screenings ran smoothly, with no issues or disruptions.

Due to popular demand, the next Community Movie Day has already been booked for 26th May (May Half Term).

## **Youth Service – Football session Feb HT**

The Year 5 & 6 football session was very well attended, providing a positive and energetic activity for young people during the half term break. A total of 22 participants took part, with 12 new young people registering for the Youth HUB following the session. This strong engagement demonstrates both the appetite for local youth provision and the session's success in attracting new members, supporting their health, wellbeing and continued involvement in community activities.

## **Coming up Events**

- 14th March – Town Mayor's Easter Wreath Making
- 2nd April – Easter Egg Trail
- 17th April – Town Mayor's Civic Reception
- 8th May – Town Mayor's Charity Quiz
- 9th May – Community Litter Pick with Kingsmoor Lower School (10am–12pm, Hinksley Park)

- 26th May – Community Free Movie Day (11am / 2pm)
- May Half Term (TBC) – Town Mayor’s Puppet Show
- 13th June – Flitwick Family Fun Day (12pm–7pm)
- 20th June – Community Litter Pick, Millennium Park (10am–12pm)

### **Easter Egg Hunt/Trail – sponsorship**

We are pleased to confirm sponsorship from:

- Everyone Active
- Temple Flooring
- Crystal Clear Limited

Everyone Active will also attend with their mascots, who will take part in the trail and introduce small interactive challenges — enhancing the experience for children and families

### **Flitwick Family Fun Day**

The Family Fun Day is building strong momentum.

Sponsorship packages have generated extremely positive responses, with £1,350 raised so far. The stall booking form is now live on the Town Council website, with eight bookings already secured.

Harris Rides have confirmed the following attractions:

- Waltzer
- Dodgems
- Twister
- Crooked Cottage
- Jets
- Mini Waltzer
- Chairs

Ride pricing has been kept affordable at £1.50 per person, with Dodgems priced at £2 per car, ensuring accessibility for families.