



**DRAFT MINUTES OF THE CORPORATE SERVICES COMMITTEE MEETING
HELD ON TUESDAY 22nd JUNE 2021
AT 7:30PM VIA VIRTUAL ACCESS**

Present:

Cllr I Blazeby (Chairman)
Cllr J Roberts
Cllr A Snape
Cllr R Shaw
Cllr G Mackey
Cllr D Toinko
Cllr Thompson
Cllr H Hodges

Also present:

Rob McGregor – Town Clerk & Chief Executive
Stephanie Stanley – Corporate Services Manager
Beverley Jones – Communications & Marketing Manager
Sally Auker-Phillips – Administration Officer

667. APOLOGIES FOR ABSENCE

No apologies received.

668. DECLARATIONS OF INTEREST

To receive Statutory Declarations of Interests from Members in relation to:

- (a) Disclosable Pecuniary interests in any agenda item – None
- (b) Non-Pecuniary interests in any agenda item - None

669. CHAIRMAN'S ANNOUNCEMENTS

There were no announcements.

670. PUBLIC OPEN SESSION

There were no members of the public present.

671. MEMBERS QUESTIONS

There were no questions.

672. MINUTES

- a. For Members to receive and adopt the minutes of the Corporate Services meeting held 29th April 2020.

Members received and adopted the minutes of the Corporate Services meeting held on 29th April 2020.

673. MATTERS ARISING

- a. Minutes of the Corporate Services Committee Meeting 29th April 2020.

None.

674. ITEMS FOR CONSIDERATION

Strategy & Delivery Plan

Members were asked to discuss following up on the Strategy and Delivery Plan.

Members were asked to discuss resident feedback from the Strategy survey (online + paper).

The Chairman commented on the percentage of residents' feedback being low and mentioned that it did not diminish the efforts of what had been done. However, the 80% of people that completed the survey rated 'supporting' or 'strongly supporting' all the elements and acknowledged what FTC hoped to achieve.

The Chairman noted some constructive feedback that was obtained from the survey commentary which, he said, would be impossible to categorise. It was suggested for each Committee to extract specific parts from the survey that fitted into their remits of the strategy and to re-visit and discuss at the next full Council meeting.

Three main points raised from the survey were a lack of GP surgeries in Flitwick, The Rufus Centre being too far out of town and that people would like to see the Village Hall as a focus.

The Chairman added there was a need for improved disabled access for residents and more discussion on the Green Strategy.

A comment was made regarding the continuous confusion of what CBC were responsible for versus what was FTC's remit. This was thought of as a thread that goes through everything - the Strategy, comments on FTC Facebook page and Councillor Surgeries which would need addressing. This would be approached via the Comms & Marketing Plan. It was agreed that it would be useful to highlight on our website exactly what FTC's responsibility were to allow residents to differentiate the responsibilities from CBC

The Chairman commented that there were no intention to make any decisions at this meeting and there was nothing mentioned that had not already been discussed at the Strategy workshops, but the Council needed to ensure the action plan incorporated all the facts. In summary, it was decided that in terms of the delivery plan, all the items that came out of the strategy be identified and added to the draft 'buckets' created on the Sharepoint Planner system. These will be discussed at the next possible meeting of each Committee.

It was noted that the actions on the delivery plan associated with Community Services' remit would be discussed at the August meeting.

675. ITEMS FOR INFORMATION

- a. **Website & Communications Update**

The Communications & Marketing Manager was unable to give a verbal update due to Technical difficulties connecting via virtual access. She agreed to circulate a report to Committee Members after the meeting.

b. Environmental Update

There were no updates.

676. PUBLIC OPEN SESSION

There were no members of the public.

677. EXEMPT ITEMS

The following resolution will be **moved** that is advisable in the public interest that the public and press are excluded whilst the following exempt item issue is discussed.

12a) Leases update – for information

12b) Land update – for information



FLITWICK TOWN COUNCIL

Report to Corporate Services 27th July 2021: FTC Noticeboards

Implications of recommendations

Corporate Strategy: Communicate effectively with all stakeholders

Finance: Corporate Services Budget

Equality: Increases inclusivity

Environment: Takes forward policy objectives directly

Background

The Town Council currently has four external noticeboards located by the Library, at the Village Hall, Station Road by entrance to green space, and on the green at Brookes Road (see Appendix A attached). Some are branded FTC and others are plain. The noticeboards on the west side of the town are very close together so coverage is minimal in that area.

These are predominantly used for displaying committee agendas which is a statutory requirement. The amount of display space is restricted on some noticeboards due to size so we do not have the space to advertise events.

Introduction

Not all residents have access to social media and therefore may not be kept up to date with FTC news, events and opportunities. Noticeboards are a way to help keep residents informed on everything that is happening in the town inbetween production of Flitwick Papers. However, some of the noticeboards we have do not provide the display space needed to do this which is a missed opportunity.

There is little coverage across the west side of the town due to the close proximity of the noticeboards at the village hall and by the library. We have therefore looked at possible additional locations for noticeboards on the west side within FTC's ownership and have identified the green area in front of the parade of shops in Vicarage Hill as an ideal location.

In addition, it should be noted that there is no consistency with the look of the current noticeboards and they do not portray a professional image for the Town Council.

Additional Matters

There are a wide range of options for new noticeboards in terms of size, finish, fixings, etc. The starting cost would be £750 plus VAT. There is no specific budget allocated for noticeboards.

Recommendations

For the committee to agree to replace existing noticeboards where necessary and approve new noticeboard location in Vicarage Hill. If agreed, detailed costings and options will be circulated for consideration at next month's Corporate Services Meeting.

Communications & Marketing Manager
July 2021

Flitwick Town Council Noticeboards

Current Locations

Village Hall



Path between Library and Village Hall Car Park



Brookes Road



Station Road





FLITWICK TOWN COUNCIL

Report to Corporate Services 27th July 2021: Website Update & Analytics

Update

Interactive Map - Video and Audio Installation

The website developers have confirmed that it will be possible to add video and audio to the interactive map template which would enhance the user experience of the map. The simplest and most cost effective way to do this would be to add a video or audio embed to the pop up that currently houses the image and text for the map icon. This would cost £120.00 plus VAT.

We have now used the interactive map three times. For the third party Halloween Trail, Flitwick Festive Fun and the Scarecrow Festival. We are now in the process of setting up an interactive map for the third party Lockdown Car Show, and for the Front Garden Competition.

Pop Ups

The existing pop ups have not generated much response from users with only the question 'How can we improve the website' prompting 6 responses. We are able to adapt the existing pop ups in-house to promote individual events which will be the best way of using pop ups going forward if we want to continue using them.

Online Forms

Online forms have now been created inhouse rather than via the website developers and have been used so far for entry to the Scarecrow Festival and Front Garden Competition. We currently have a form created for feedback for the Barclays Bank proposal.

Local Groups, Clubs and Organisations

This page has been expanded with a new filter added for 'Support' featuring organisations that offer support and advice on a wide range of issues. This is in response to Cllr Hodges suggestion to have a section on the website that people can refer to for help and support, particularly with the continuing impact of COVID-19. We are still adding to this and we will be promoting the resource on social media and in the next edition of Flitwick Papers.

Communications and Marketing Manager
July 2021

Flitwick Town Council Website Analytics

Date	Users	Sessions	Average Session
25 th May to 21 st June	1,600	2,100	2m 20s
22 nd June to 22 nd July	3,300 +115.3%	4,500 +112.9%	1m 36s -30.7%

Top 10 pages – 22nd June to 22nd July

1	Home page
2	/whats-on/flitwick-scarecrow-festival-map-trail/
3	/ftc-events/flitwick-scarecrow-festival/
4	/about-your-council/vacancies/
5	/ftc-events/flitwick-lockdown-car-show/
6	/about-your-council/agendas-and-minutes/
7	/visiting-flitwick/parks-and-open-spaces/
8	/scarecrow-festival-2021-free-entry/
9	/whats-on/calendar-of-events/
10	/about-your-council/councillors/

User Breakdown 81.1% New Users – 18.9% Returning Users



FLITWICK TOWN COUNCIL

Corporate Services 27th July 2021: Social Media Report

Social media is one of the Council's main communication tools. We have been developing our social media channels to increase engagement with the addition of Instagram this month which we are now in the process of building followers. We are also looking at the LinkedIn pages for Flitwick Town Council and The Rufus Centre to build engagement with the business community.

This report covers Flitwick Town Council channels only. In addition to Flitwick Town Council sites, we also manage the following social media sites:

Rufus Centre

Facebook

Twitter

Instagram is currently in the process of being set up for the Rufus Centre (we have a technical issue we are in the process of trying to resolve)

Weddings at the Rufus Centre

Facebook

Rendezvous Café

Facebook

Instagram

Flitwick Carnival

Facebook

FLITWICK TOWN COUNCIL SOCIAL MEDIA SITES

FACEBOOK @FlitwickTC

Number of page followers: 3,465

Number of page likes: 3,127

Period: 24th June – 21st July

Posts reach: 36,405

Number of FTC posts: 50

Number of posts shared by FTC: 14

Top 10 posts – see Social Media Report Part 2

TWITTER @NewsFTC

Number of followers: 490

Period 24th June – 21st July

Number of tweets: 28

Tweet impressions 593

Profile visits: 1,498






Top 10 tweets – see Social Media Report Part 2

INSTAGRAM @flitwicktowncouncil (launched 1st July)

Number of followers: 25

10 posts

FLITWICK TOWN COUNCIL – TOP TEN FACEBOOK POSTS (24TH June to 21st July)

Post Content	Reach	Likes	Shares	Engagements
Flitwick's first Scarecrow Festival starts today! Out in the town for you to explore are more than 45 scarecrows! How many will you find? View the map showing where	26,320	181	18	1,360
 A date for your diary! Saturday 25th September we have a fantastic Family Fun Day planned at Millennium Park. This event will include a free Vintage Fun Fair and	8,288	58	26	852
 Are you proud of your peonies, delighted with your delphiniums or beaming with joy over your begonias?	4,924	4	3	152
This time next week will see the start of the first ever Flitwick Scarecrow Festival. There's still time to get involved and create your own scarecrow to put on	4,315	15	9	263
 Our Public Realm Team have been busy today adding vibrant colour to the planters on the area outside Barclays Bank. As well as colourful geraniums, they've	3,471	75	5	591
☆☆ Time for a change? - Come and work with us! ☆☆ If you are looking for a new job we have an exciting	3,319	-	11	243
 We're taking part in the NHS Big Tea on Monday 5th July. Join us at Millennium Park between 2pm-4pm for tea and cake or order one of our special NHS Big	2,937	7	3	95
Each day for the next week we will be sharing fact sheets on behalf of Aquarius Young People's Team,	2,484	-	3	28
 Calling all gardeners - don't forget to enter the Flitwick Front Garden Competition this August.	2,291		3	95
Looks like our soldier scarecrow's been celebrating England's football success last night as we've found him wrapped in flags this morning! We've had a fantastic	1,820	47	3	224

FLITWICK TOWN COUNCIL – TOP TEN TWEETS (24TH June to 21st July)

Post Content	Impressions	Engagements
Family Fun Day announcement	417	58
Last day of Scarecrow Festival	366	3
NHS Big Tea at Millennium Park	294	6
Mind BLMK Action Challenge – Town Mayor's charity	250	2
FTC at the Market	217	4
Perfect weather for enjoying new outdoor gym equipment	204	8
First ever Scarecrow Festival is over	198	8
Coffee morning at market in aid of Town Mayor charity Respite at Home volunteers	191	2
We're delighted all scarecrows are present and correct	182	41
Looking forward to the start of the Flitwick Scarecrow Festival	174	5



Carnival



The Rufus Centre

Welcome to

Flitwick

Take a look inside to find out about your local area



Manor Park



Classic Car Show

Welcome to Flitwick!

We hope you are settling into your new home.

Whether you're new to the area or have always been local, this leaflet aims to give you an insight into what's happening around you, the amenities on offer and who to call for different services.

Flitwick is so much more than a commuter town and there's plenty to get involved in.

The photos opposite are just the start of what Flitwick offers. Inside this leaflet we will showcase what the Town Council does as well as point you in the right direction for other service providers for enquiries you may have.



If you have any questions on anything you see inside this leaflet please do not hesitate to contact the Town Council office by any of the following channels:

Phone: 01525 631900

Email: info@flitwick.gov.uk

Website: www.flitwick.gov.uk

Social Media:





In case you didn't already know, the Town Council offices are based at The Rufus Centre in Steppingley Road.

The Rufus Centre is a multi-functional building which is owned and managed by the Town Council. It is home to our staff, business tenants, conferencing events, private functions and many community activities throughout the year.

► What We Do

As well as managing The Rufus Centre and community projects, our services include maintaining 9 play areas, 2 allotment sites, the Burial Ground, Flitwick Manor Park and The Hub.

We offer community groups the opportunity to apply for a grant (annually) to help with projects that benefit Flitwick residents.

We communicate with residents via the Flitwick Papers, on social media pages, the website, emails and the more traditional way - phone calls!



► Contact Us About

The Town Council deals with Flitwick matters relating to:

- Allotments
- Burial Ground
- Environmental Improvements
- Events and Activities
- Flitwick Manor Park
- Grants
- Play Areas
- Parks & Open Spaces
- The Rufus Centre
- The Hub

Call Us
on
**01525
631900**

Central Bedfordshire Council deals with other services for Flitwick residents, including Planning, Housing, Refuse Collections and Social Services. See page 10 for more details.

Flitwick Town Councillors

► What they do

Your 17 Town Councillors are elected Members who make decisions for the benefit of Flitwick and its residents.

In addition to making key decisions at Council meetings, they also, in their volunteer capacity, help at our events and some are champions of particular community initiatives, e.g. Young People, the Police and Flitwick Manor Park.



► Contact Numbers

Mike Ashton 01525 754550

Keith Badham 01525 630868

Ian Blazeby 01525 634585

Mark Bonner *Contact Town Council Office*

Jeremy Dann 01525 713751

Patrick Feerick *Contact Town Council Office*

Adam Larkins *Contact Town Council Office*

Ann Lutley 01525 712837

Gareth Mackey 01525 712537

Martin Platt 01525 713017

Keith Quantrill 01525 715904

John Roberts 01525 716360

Michael Sheehan 01525 720027

Phillip Thompson 01525 716504

Mark Waites 01525 715170

Maureen Williams 01525 714714

These were the Councillors as of the date of printing this leaflet

► Annual Events

Flitwick Carnival

This is the town's most anticipated community event. Each year there's a different theme which spreads throughout the whole event from the parade entries through to the spectacular Arena Acts and stalls. The event is held at the Millennium Park in Dunstable Road on the second Saturday of June each year.

Classic Car & Bike Show

Vintage vehicles make their way to the Rufus Centre field on the first Sunday in August for what has become very much an established show in Bedfordshire. As well as cars and bikes, we have auto jumble, live music, children's entertainment and so much more.

Older People's Christmas Lunch

In the run-up to the festive season 160 older people join us for Christmas Lunch at the Rufus Centre. It's 3 courses of delicious food, live music and Father Christmas hands out gifts!



Call Us
on
**01525
631900**

Community Events



► Regular Activities

In addition to the annual events we also organise:

- Flitwick Business Club
- Monthly Lunch Club for Older People (2nd Friday of the month)
- Forget Me Not Group for people with memory problems or Dementia and their Carers
- Over 65's Men's Club
- Tea Dances (on selected Thursday afternoons and Saturday nights)
- Bingo Afternoons (last Friday of the month at the Village Hall)
- Half Term & School Holiday events for children
- Flukes (Flitwick Ukuleles)

The Rufus Centre: During the Week

► Conferencing

Our speciality is providing meeting space for businesses, local authority organisations and charities.

The meeting rooms vary in size depending on customer needs and can accommodate bookings from interviews and team meetings through to large scale conferences and exhibitions.

Equipment is available to hire and we have an optional catering service.

Call Us
on
**01525
631905**



The Rufus Centre
Meet, Work, Celebrate

www.therufuscentre.co.uk



/TheRufusCentre



► Free Wifi

Email Us
via [bookings@
therufus
centre.co.uk](mailto:bookings@therufuscentre.co.uk)

► Funeral Receptions

The function rooms are private in comfortable surroundings and can accommodate large or small guest numbers.

The venue allows for you to bring in external caterers or the In-house Catering Team is available to help produce a hot or cold buffet if that is what you want.

From the moment you arrive, staff will make certain that everything is taken care of. The team are supportive, reliable and compassionate to assist you and your family at this difficult time.

Our Dining Room has an optional bar facility and our staff can help serve teas and coffees.

Celebrations at The Rufus Centre

► Treat our space like a blank canvas and make it your own

Whatever celebration you're planning, whether it's a wedding, party, christening or anniversary, why not see if the Rufus Centre could work for you?

We don't have set packages or insist you use particular suppliers and the Team can be as much, or as little, involved as you like.

Our In-house Catering Team can provide you with delicious hot or cold meals or buffets but you can also choose to bring in external caterers if that suits your celebration better.

Email Us
via bookings@therufuscentre.co.uk

► Proms

► Parties

► Weddings

► Christenings

► Anniversaries

► School Reunions

The venue is perfect for couples to celebrate their engagement or for the 'Party Back Home' after an overseas wedding.

Our main, largest function room, The Lockyer Suite, can accommodate up to 240 guests.

Call Us
on
**01525
631905**



The Rufus Centre
Celebrate in Style

www.therufuscentre.co.uk

What you might not know...

► Some Historical Sites

- **Flitwick Manor Park** - Listed Grade II in the English Heritage Register of Parks and Gardens
- **Flitwick Mill** - Domesday Mill Site and Listed Building
- **Parish Church of St Peter & St Paul** - Grade I Listing Building
- **The Mount** - *Flitwick Motte and Bailey* - now a quiet open space - recognised by English Heritage and is protected as a Scheduled Monument
- **Two Moors Heritage Trail** - along River Flit beginning at Flitwick Mill with points of interest along the route

NB: This is not a complete list of historical sites locally



► Community Exchange

In 2015 the Town Council initiated a Community Exchange with Calvisson in France. Community Exchange programmes are different to the more traditional method of 'Twinning' because there is no cost to the Council.

Benefits relate to the cultural and social links that are formed between the two towns and now the advances in technology have paved the way for Skype and social media platforms, communication between the two organisers can be done more easily.

If you're interested in joining the Community Exchange Committee please contact the Town Council.

► Local Groups *NB: This is not a complete list of local groups.*

Amphill & District Rotary - Contact Linda Lees
01525 450120 / <http://www.amphillrotary.org/>

Flitwick Scout Group - Contact Jonathan Smith
jonathangsmith@ntlworld.com / 07831-874309

Flukes Ukulele Group - Contact Jeremy Dann
jeremy.dann@uwclub.net / 01525 713751

Girlguiding - Contact Angela Walker (District Commissioner)
angela.g_walker@yahoo.co.uk / 01525 754861

Jubilee Cantate Choir - Contact Phil Thompson
01525 716504

► Doctors & Dentists

Flitwick Surgery
01525 715300 / The Highlands

**Flitwick High Street
Dental Practice**
01525 717288

**Flitwick Station Square
Dental Practice**
01525 721200

**Kings Dental
Flitwick**
01525 719844



Flitwick Library Stall at the Carnival 2016



In the Community



► Flitwick Library



Opening Hours:
(subject to change)

Monday, Tuesday, Thursday & Friday
9.30am - 6pm

Saturdays 9.30am - 4pm

At Flitwick Library you are able to access a wide range of services. You may not know how much libraries have changed but we're proud to say that we do more than issue books.

We offer a range of events like Knit & Natter, Adult Colouring, Reading Groups, local and family history information and Good Afternoon Talks. For younger members we have Crafty Tots, Mega Blocks, Lego Club, Chatterbooks and a Teen Reading Group. During the school holidays there are lots of fun things to do, like daily craft activities and the Summer Reading Challenge.

We have FREE wifi, newly upgraded computers and customers can access numerous online resources.

We look forward to meeting you!

► Leisure Centre

January 2016 saw the opening of a brand new state of the art Leisure Centre facility in Flitwick.

The Centre provides a packed fitness classes schedule ranging from more relaxing exercises, e.g. Pilates, through to high intensity sessions, such as Insanity and other aerobics classes.

The gym is a very impressive Fitness Suite with a separate area for weight training. For those who prefer 'Wet Side' activities, the Centre offers aqua fitness classes and a large pool for general swimming.

Other sports include the indoor Climbing Wall, squash, badminton courts and 3G football pitches.



► Train Station

Flitwick has excellent train links from its own railway station.

There are direct trains to the City of London 24 hours a day and London Kings Cross can be reached in as little as 40 minutes. Blackfriars and the City are only 50 minutes away!

If you're needing to fly somewhere then Luton Airport can be reached directly in 20 minutes whilst Gatwick Airport takes 1 hour 50 minutes.

With an easy change at Bedford Station, Nottingham, Leeds and the North can all be easily reached too.

For enquiries relating to Flitwick Station please visit <http://www.nationalrail.co.uk/stations/flt/details.html>



lifestyles @ flitwick



lifestyles @ flitwick

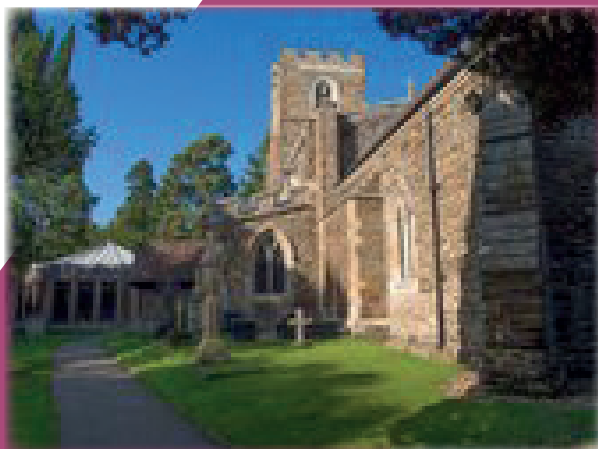
► Central Beds Council

Many residents get confused about what the Town Council is responsible for compared to what the Unitary Authority, Central Beds Council (CBC), do.

Here's a list of departments and services which fall under CBC's remit so if you have any enquiries for these matters, please phone 0300 300 8000:

- Amenity Areas
- Archives
- Education
- Environmental Services
- Grants
- Grass Cutting
- Highways
- Industrial Estates
- Libraries
- Litter Clearance
- Planning
- Recreation & Leisure
- Refuse Collections
- Recycling
- Social Services
- Street Lighting
- Trading Standards
- Traffic Management
- Youth Services

Priory House
Monks Walk
Chicksands
Shefford
Beds
SG17 5TQ



► Local Schools

Flitwick Lower School

Temple Way / 01525 755444

Kingsmoor Lower School

Kingsmoor Close / 01525 712448

Templefield Lower School

Malham Close / 01525 713625

Woodland Middle School Academy

Malham Close / 01525 750400

► Churches in Flitwick

Flitwick Baptist Church - Contact Pastor Michael Teutsch
07711 244926

Flitwick Methodist Church - Contact Rev. Graham Claydon-Knights
minister@flitwickmethodistchurch.org.uk

Flitwick Parish Church - Contact Rev. Lucy Davis
Lucy@flitwickchurch.org

Sacred Heart Church - Contact 01525 715109
secretary@sacredheartflitwick.co.uk

Young People

► About 4YP

4YPUK Ltd are a local social enterprise specialising in a range of services offered to young people through community settings and schools.

Youth Voice

If, as a young person, you want your views, ideas and suggestions to be heard then Youth Voice would welcome hearing from you! It is a small, friendly group who meet regularly at The Hub (Coniston Road, Flitwick). Come and help shape the services available for young people locally.

► Impartial Careers Information

4YPUK offer careers information, advice and guidance to young people aged 16-19 years. They are commissioned by Central Beds Council to offer support through Advisors to those at risk of leaving/left education, employment or training and need help to explore and secure next steps.



► Youth Voice

► Youth Services

► Careers Advice



► Youth Work

Commissioned by and working closely with Flitwick Town Council, 4YP offer 2 main provisions for the young people of Flitwick, mainly at The Hub.

Age 9-12 years session on Thursday Evenings

Age 13-19 years session on Wednesday Evenings

Popular sessions have included talent shows, games, Hama beads, cooking and themed evenings, such as Australian Night and World Kindness Day.

We use space outside in the summer months allowing us to run a different set of activities. Luton Town FC have joined us twice to run training sessions which is extremely popular with girls and boys.

How to get in touch:

For information on Youth Voice or Youth Work contact Wendy on 01582 742285 or email wendymillgate@4ypuk.com. Your local 4YP Careers Advisor is Gill Boydell and she is contactable on 07903 695757 or email gillboydell@4ypuk.com.



DAVID HEAD

Furniture Makers



*A new bedroom needn't cost the earth.
With our range of Bespoke Bedrooms
we can suit almost any budget
No hidden costs,
Call now to book an appointment*

01525 753737 e-mail info@davidhead.co.uk



THE QUEEN'S AWARDS
FOR ENTERPRISE:
INNOVATION
2016



01582 742275 / 01525 213 179

homeinstead.co.uk/lutonandcentralbedfordshire

 homeinsteadbedfordshire  @seniorcarebeds

The UK's Leading Home Care Service

A well established and highly respected independent UK home care provider, Home Instead Senior Care is part of a worldwide organisation devoted to providing the highest-quality care for older people in the comfort of their own homes. We offer a wide range of one-to-one services tailor made to the needs of the individual - and home visits can be from an hour a day up to 24 -7 care that includes weekends and holidays.

Services are flexible to the needs of each client. These can include personal care such as assistance with bathing, dressing, eating and medication; home help covering all aspects of day-to-day housework, shopping, meal preparation and household duties; and companionship services that can involve everything from escorting clients on visits or appointments to simple conversation and good company.



HARROLD|OPTICIANS

Your vision...Our care



Half Price Eye Test

... only with this advert



Harrold Opticians are your local family run practice where your vision is our care. With glasses from £49, the latest designer eyewear and prescription sunglasses we have something for everyone.

If you are thinking about contact lenses you can try them FREE.

Already wearing contact lenses? Ask us about the latest designs and materials to enhance comfort and vision.

Remember NHS eye tests are FREE for children and over 60s ...just ask. Call us today, pop in or book via our website ...

www.harroldopticians.co.uk/branch/flitwick

2 Steppingley Rd Flitwick MK45 1AJ 01525 714767

Flitwick Jewellers

We are proud to be a independent family business with a commitment to customer service being our highest priority.

Jewellery Repairs

Watch Repairs

Jewellery Design
& Remodelling

Valuations

Engraving

Rethreading

Ear Piercing

Watch Battery &
Strap Fitting

Diamond & Gem Set Jewellery

Bridal Service

Silver & Gold Jewellery

Branded Jewellery & Watches

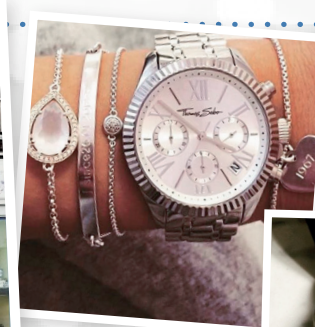
Thomas Sabo

CLOGAU

TROLLBEADS
THE ORIGINAL SINCE 1976

CITIZEN
ECO-DRIVE

HOT DIAMONDS
Sterling Silver & Real Diamonds



1 Station Square,
Flitwick, Bedfordshire,
MK45 1DP
01525 712597

info@flitwickjewellers.co.uk
Monday to Saturday: 9.00 - 5.30





Does your pet need an auntie?

No need to worry...
I will care for your pets in your own home so that you
can enjoy your holiday with total peace of mind

Cat feeding, cuddling & playing
Rabbit, guinea pig, hamster & other small furries
No obligation visit to meet you and your pets
CRB checked
Fully insured

Your pet's happiness, safety and your home security
are my highest priority

Please contact Jody
Landline: 01525 752274 Mobile: 07879 625957
Email: JHearn8557@aol.com



The Rufus Centre



Meet, Work, Celebrate

Now a Venue for Funeral Receptions

From the moment you arrive
we take care of everything for you

Telephone: 01525 631905 www.therufuscentre.co.uk
The Rufus Centre, Steppingley Road, Flitwick, MK45 1AH



ISO CERTIFICATION

WANT TO ACHIEVE IT?

We can help you with:

- Awareness and understanding of what's needed
- Guidance and advice
- Support from start to finish
- Ongoing support after certification

ALREADY GOT IT?

We can help you to:

- Use it as a business tool – not just a plaque on the wall
- Understand the philosophy of it
- Make it work for your business
- Drive forward improvements

MORE THAN JUST TICKING BOXES

Email or call to arrange a free of charge, no obligation
consultation to discuss your requirements.
rwqinfo@gmail.com ■ 07722 282664

Relax Refresh Renew

Avaní Holistics & Beauty

01525 888679

07843018010

*CND Manicure & Pedicure, Shellac Gel Nails
Aromatherapy & Deep Tissue Massage, Pregnancy Massage, Indian Head
Massage, Hot Stone Therapy, Ear Candle Therapy,
Holistic Facials, Reiki, Waxing*

Gift Vouchers Available

*Quiet, tranquil treatment rooms
Conveniently located at The Rufus Center
Late evening appointments available on request*



WWW.AVANIHOLISTICS.CO.UK





ARE YOUR STAFF SITTING COMFORTABLY?



Show them you care with office & breakout seating made here in Bedfordshire.



please contact us for an on site, showroom and factory visit.
info@jpa-furniture.com | www.jpa-furniture.com | 01727 840800



WELCOME TO FLITWICK

Families and the local community really are at the heart of Flitwick Cricket Club and we are extremely passionate about continuing to support our growing community.

Flitwick Cricket Club is one of the highest ranked clubs in Bedfordshire. We field three senior teams on both Saturdays and Sundays and enter two junior teams at Under 10, 12 and 14 and one team at U16.

Last season we had over 160 boys and girls registered in our junior section making Flitwick Cricket Club one of the largest providers of cricket coaching in mid-Beds.

This year we will be running a Women's Cricket Team for the first time and we also play host Flitwick Rounders club.

So why not pop along and see what we have to offer. The season starts with Colts Registration evening from 7pm on **Friday 31st March.**

Even if you have no interest in playing, why not come down and watch a game during the summer, you are always welcome and the bar is always open.

We look forward to meeting you!



Flitwick Cricket Club, The Hardy Vale, Flitwick Road, Westoning, MK45 5AA (next to Flitvale Nurseries)

01525 715100 • flitwickcc.play.cricket.com



[/flitwickcricket](https://www.facebook.com/flitwickcricket)

Flitwick Business Club

Benefits to joining

- ★ No Joining Fee
- ★ Promote Your Business
- ★ Networking Opportunities
- ★ Sharing Information
- ★ 25% Off Room Bookings at the Rufus Centre
- ★ Discuss and Resolve Issues that are Important to You, e.g. Town Centre Parking

"Helping Bring Local Businesses Together"



(Picture taken on 18/11/2016. Presentation by Katey Horne, Your Marketing Needs)

For more information on Flitwick Business Club

Call 01525 631900 or email businessclub@flitwick.gov.uk





FLITWICK TOWN COUNCIL

Report to Corporate Services 27th July 2021: Local Business Advertising Support

The Council is committed to supporting local businesses. The Flitwick Business Directory on the FTC website continues to grow with over 100 Flitwick based businesses listed and we continue to encourage Flitwick based businesses to sign up for free to the online directory to help promote their products and services.

Many local businesses continue to facing challenging times due to the ongoing impact of COVID-19. We have identified an opportunity to offer further support to local businesses through Flitwick Papers now that it has returned to a printed version.

In the past Flitwick Papers has featured two pages of 'dinky' adverts on the back pages. These ads are a sixth of a page – 60mm x 60mm. The rate card cost of these ads is currently £36 b/w and £48 colour inc. VAT.

We are proposing that we offer either one page or two pages of these adverts free of charge to local businesses commencing with the Autumn edition of Flitwick Papers. This would enable us to provide free advertising support for six or twelve Flitwick based businesses respectively.

The process of identifying what businesses to support should be made as simple and fair as possible. We suggest that initially we offer the free 'dinky' ads to Flitwick based businesses who have advertised in Flitwick Papers in the past.

After we have included all of the businesses above we have identified two simple options for allocating the free advertising support:

1. Promote the opportunity via social media and ask local businesses to get in touch if they are interested in being included, with adverts allocated on a first come, first served basis.
2. Enter all businesses signed up to the Flitwick Business Directory into draw for the free advertising support. Through social media promotion, this could also encourage businesses who are not already in the Flitwick Business Directory to sign up.

If agreed, the promotion would start next month in preparation for the Autumn edition of Flitwick Papers which will be published mid-September.

Communications & Marketing Manager
July 2021

FLITWICK TOWN COUNCIL DRAFT STRATEGY 2021-2025 RESIDENTS' SURVEY

CORPORATE SERVICES

Feedback from Strategy Survey for Corporate Services.

VISION

The vision does not need the word "improved".

Engagement with the community is a must. Council need to take into consideration the views of the community they serve, current methods are not completely obtaining this objective.

More green leaning strategy covering how saving planet will be achieved.

Not take away open spaces accessible to all ages.

Flitwick needs to look 'well managed', currently the town look very scruffy; verges are uncut, footpaths overgrown, graffiti on the millennium park (just examples) all give a extremely poor impression to residents and visitors alike. It's hard to see how you will attract investment if you're not doing these basic things even moderately well. If this is not FTCs responsibility you need to lobby CBC to do much better.

Life enhancing environment should reference enhancing the rural quality of the town.

Making the town accessible for wheelchair users.

Increased facilities for residents including doctors and dentists as these facilities are overwhelmed. We also need a strategy for dealing with commuter parking in the town as this is a huge problem within a mile of the station on every main road including The Ridgeway, Manor Way, Temple Way. A parking system such as that in The Avenue and Kings Road would solve the problem everywhere.

Equipped with all the facilities needed i.e. doctors surgery.

Safe.

Keep the town more safe and teach the kids not to touch or walk on someone's property.

A bigger doctors surgery.

The word 'improved' doesn't really add anything and doesn't feed 'visionary' - perhaps you could articulate what 'improved' would look like and then include that - dynamic, vibrant? Also, could reference a 'culture' alongside 'environment' so it's about people as well as the place.

More doctors surgeries, more local shops, better community services. A zebra crossing on the bridge at the Station to ensure safety.

I don't use social media. So something that can be accessible for a resident like me to find information or be notified of any upcoming events.

Stop building new houses.

Facilities for everyone - enough capacity.

No, this is great as an aspiration. But in my 20 years here I've only seen some small steps towards this.

Vibrant look at that monstrosity you created to make a bus depot. High crime and litter nothing here to shout about hopefully prices of houses go up and i can move. Nothing worth seeing or doing its all rubbish.

A translation into everyday English. It reads like a management speak. Are you really trying to create a beast that needs feeding with layers of management, operating principles, etc? Are you saying this is the only way to deliver the very simple level of services the Council needs to? Let's stop pretending we are something we aren't.

More help for disabled residents and visitors.

I wonder if "for all" should be added at the end to emphasise the inclusivity of the vision.

Recognise that growth is not always the answer.

Lack of doctors, poor water pressure for residents, lack of consideration for increased traffic.

For every resident.

To put the plans into action for Station Road with a new scout hut which was promised along with other builds, have better plans for Maulden Road country park and build the planned home on Steppingley Road instead of Ferndale. Where does this leave Ferndale for much needed improvements which won't be able to be done on 5e existing plot? It seems everything has been scraped like everything which is planned for Flitwick. Extremely disappointing news. We want good amenities with a new doctors surgery among so many other things.

Doctors surgery/ health centre.

More Doctors.

Play areas for children, proper development of the "country park", beautification of the town centre to encourage local and national business to invest, facilities for teenagers.

Provision of services accessible for all.

Vision as too aspirational, vibrant and inclusive are not words that resonate when thinking of Flitwick, quite the contrary.

Explanation of what is meant by vibrant! It is not self explanatory.

An actual vision would have been good....

The town does not enhance life, there is no investment in facilities for residents, the residents are forced to go elsewhere.

Emphasis on sustainability. Housing for young/first time buyers.

Doesn't actually say anything does it, just usual words & blather.

Lobby for safer roads, crossings and pavements by supporting residents who have problems in their areas.

Supporting local businesses to thrive

Traffic calming, average speed cameras, would be the best way to go as speed bumps done not work.

More disabled access. Unfortunately, Flitwick is not disabled friendly, it feels that when new projects happen disabled access is not considered. In 2021 we should be inclusive to all residents.

This covers pretty much everything.

There has always been a vision but as yet we have to wait for that 'vision' to be realised. Words not deeds.

It is the people of Flitwick that make it vibrant and welcoming and I do not see how the Town Council improve this. The Rufus Centre is so far out of the town you need a car to get there. The same for the leisure centre.

Roadside draining. Road drain side grills cleared.

To specifically engage with 13-18 age group. Inclusively, empowering them, making them feel valued and respected, so that in turn they do not feel the need to litter, daub graffiti and make their presence felt via loudness or dangerous road behaviours on bicycles, scooters, etc.

Access for disabled would be great. Something for the teenage community to give them something positive to do.

More parking.

Please use 'our voice' to pressure CBC in providing public disabled parking spaces in East Ward for PO, etc. Random police presence for shocking outbreaks of ASB.

Stop using weedkiller, be selective in mowing and salt application. Too many dead plants due to CBC ignorant behaviour.

More affordable, decent housing.

MISSION

CBC will always restrict what we want to achieve.

Making the town accessible for wheelchair users.

Increased facilities for residents including doctors and dentists as these facilities are overwhelmed. We also need a strategy for dealing with commuter parking in the town as this is a huge problem within a mile of the station on every main road including The Ridgeway, Manor Way, Temple Way. A parking system such as that in The Avenue and Kings Road would solve the problem everywhere.

Support for all.

Champion diversity in addition to equality.

There is huge opportunity for Flitwick in the next four years. The large numbers of commuters will likely reduce in number and more will work from home. It doesn't feel like this is explicitly captured in the plans. People should have more time to spend around here and more money to spend locally.

'Advocating to influence beneficial development, investment and services' doesn't sound very concrete - something more like 'we will work with partners to develop the local area and bring investment to local services' feels more purposeful and action driven.

Again, good mission statement but it's not been delivered.

Community spirit is more important than your equality words.

Make sure that there is sufficient infrastructure in place. No more housing needed.

Beneficial development on existing land whilst protecting the green spaces that surround Flitwick.

Define sustainability because this word means nothing, builders stick it onto plans to get approval then build new houses with no parking and no way to charge electric cars in future.

The Council should be prepared to Lobby and engage with other bodies to promote the requirement of a growing community. For example, Health Centre facilities.

This is the same mission statement that has been produced for years with no action, just a change in the words.

No, wholly support your mission as being appropriate.

Far too much residential development and with little concern to improving infrastructure first before further development. For example, GP surgery struggles to cope with demands of increased residents, Steppingley Road just seems to get busier and the area around the entrance to the train station has been a disgrace for years.

Actively improve the town by actions.

Usual apathy will apply.

You've led the residents on for 2 years about improved facilities for local groups, there is no development in the town to bring in shops or restaurants for the residents. CBC continually change their mind, and have wasted money on plans such as the multi-story car park, the retail development, etc. etc.

Protecting the town from over development.

Although I agree with what is written there is absolutely nothing new is there, just a rehash of that which has always existed.

Stronger emphasis on non-house facilities (doctors, community buildings)

Again, please include your disabled residents and not as an afterthought.

I think the aspiration is to engage with ALL residents, organisations & businesses

A specification and explanation of how the Mission's four statements are to be implemented and achieved. As it stands, the four statements are idealistic or utopian.

Ask the school authorities to ask the school children to take their litter home i.e. cartons, food wrappings, drink cans, unfinished food, plastic bottles, etc.

The word 'Mission' is modern use in this instance is very strange to me. Maybe this whole document could have been worded more simply.

Some help needed for disabled people. Organisations that hold meetings in the Village Hall struggle without electric doors. The two parks are not easy to use with a wheelchair. I'm sure these comments do not come under the title of 'Mission' but I just wanted to make a point.

I have yet to be engaged and you never seem to understand our needs. I hope you will encourage community involvement because the spirit is there. I would expect openness with the money. I wish you well.

The whole scout movement and RBL needs to be fully supported in re-location to more suitable premises as this current building is not suitable for use for us to enable the groups to develop and evolve.

I do not understand the 'Mission' at all.

What's the difference between this and 'Vision'? A lot of words that need simplifying and specifying.

Getting on with the development of the bus station/train improvements already promised but so far non-existent!

Somewhere young people can meet with activities.

A PROSPEROUS TOWN

Encourage young people who wish to start up small businesses in the area, to meet, and perhaps team up to create ideas.

A new supermarket would be good.

What is the time frame for achieving this prosperity? Too vague. What are the small steps towards attaining the goal?

Try to educate the growing population what Flitwick Town has to offer so don't spoil it.

The market is hidden behind the Village Hall. It needs to be promoted. More shops, not services. There is little to come to Flitwick for unless its Tesco or the station. The Carnival was a great day for the town, perhaps the Council could help in some way. The brass band and carol singing outside the bank was also enjoyed, with the street market.

There are many services that you should encourage a new doctor's surgery with parking and medical centre. So many things waiting while you talk.

Current services are not being improved to meet constant demand i.e. doctors require expanding/relocating to new building. The current middle school is not currently the correct size for this amount of children attending.

Stop all housing developments until a new surgery is up and running. No new businesses can flourish if their staff can't get adequate and speedy medical treatment.

Specifically, the provision of another GP surgery

Encourage business involvement in a more diverse manner than just barbers, Indian restaurants and estate agents. Provide a more defined town centre. Raise the bar as Ampthill is seen as a class well above Flitwick

The town needs its sense of identity to obtain these, work with the people and this could easily happen

More defined ways of tackling green issues not just saying doing nothing is not a option

Local businesses could be helped by having street festivals such as the ones Baldock runs. This also engenders a strong sense of community.

Encourage more varied traders in the town and promote a bigger more varied market that is open for longer hours

Support the Aldi planning application

The need for services are crucial to achieve the vision.

We are a small town, work should be done with the businesses already here, before bringing new businesses if they mean more building.

A prosperous town and nice place to live needs green spaces, quality and affordable housing, improved shopping facilities, better eating out facilities.

See earlier comment about more commuters staying local more and the opportunity to spend money locally.

The town lacks a sense of a 'centre' beyond the Tesco, so there is not much to build a sense of vibrant community around. More could be done with the triangle by the war memorial outside the Barclays Bank, using it as a market square, area for boutique and specialist food stalls at the weekend (beyond the awful kebab van that seems to be in permanent residency). It is a perfect location to act as a core between the main streets that hold businesses, and could be built upon to attract new business to the area.

Stop building.

New amenities to help cope with the growing town eg doctors surgery, supermarket

We must improve services and take action

Get rid of all the estate agents and no Aldi will encourage all the dross

This will not work without improved local services and facilities.

Neighbourhood Plan - We are worried are green fields are getting built on and no matter if people object it still goes ahead (money always wins).

No extra doctors, dentists

More diverse retail opportunities

Not entirely sure FTC has anything other than an influencing role in this so not sure this is deliverable

Prosperity doesn't always bring happiness to the current residents, who are affected by further development. You need to engage more closely with residents on any further development.

Again what do you mean by vibrant? Also improved against what? What is an improvement to me may not be an improvement to someone else.

What exactly will you do, other than use generalisations to cover everything and anything.

The town does well as you can get to London quickly, the town would fail without the train station. Services have not been improved in years.

Prosperity is not just about money , it's quality of life , a community that thrives and is its own support network. A town that believes in itself and takes pride in that

I'm not so sure about increasing economic prosperity - especially as first mention. More important perhaps to try to ensure that all residents have everything that they need to live comfortably and without worry.

Find ways to encourage a wider range of businesses to the town, making it more appealing to residents and visitors

Can't disagree, but again what is new here? Clearly what FTC want and what is actually achievable differ significantly. Most people just want to get on with their lives unhindered by such dreams

More emphasis on support for local residents, over people just commuting into the train station by car; encourage public transport over cars

More than barbers. We need to represent the diverse community we have & the disabled. More retail opportunities with nearby parking.

A SUSTAINABLE ENVIRONMENT

It's always going to be there, but it will need to be done with thought, engagement with the younger demographic to tackle Flitwick's environmental issues, largest we face in the town is pollution

How?

If this is to be realised, those who won't or will fully destroy the environment need to be held accountable. Would be good if living in synergy with wildlife and the nature was mentioned too to it's not so people centric.

This should be the main priority as the quality of our local environment has declined sharply in the last 30 years.

Please do not add speed bumps, as this increases pollution with the slowing down and accelerating away it causes.

Focus for the town - Barclays Bank area more seating

Commit to re-forestation where appropriate

Stop building on green space

Don't allow building on green belt land

More seating

I'll build an incinerator don't see anything for nature

Plant a lot more trees.

You can only be sustainable if you do not build on our surrounding fields. Any new developments take away valuable habitat for insects and birds which is lost forever. And no farmland should be built on as it produces food for us.

Limit the amount of large lorries that go through the town.

Sorry, but laughable. By continually increasing the size of the Flitwick population and adding a crematorium hardly creates a cleaner and less polluted town. Traffic has increased adding to pollution. A ring road would help. We also have had issues with smells and Covanta pollution. I find it bizarre that the filthy brick works close down and an eco friendly wind turbine erected just up the road and then Covanta is allowed to pollute the immediate area. Crazy!

Encouraging more walking and cycling access.

Act and make the town green, embrace the countryside, reduce pollution.

Not exactly leading the way at the moment are you...

This means keeping our green spaces no more development in an over developed landscape.

Where have you shown this?

Much, much quicker. Time has already run out, penny pinchers delaying.

I believe we should have a community shop where items can be taken to be repaired, where people can book to learn how to change a washer in a tap, where sessions are run on policy, guidance about laws (in general) where local businesses can promote themselves perhaps in sessions, where volunteer groups can be established, promoted and work from, a community hub, non political. Let's face it many plumbers for example are faceless but building rapport within the community being seen to help - becomes its own reward.

Push ahead with tree planting, maintaining the river and ponds, prevent development on green spaces and develop more recreational spaces, such as the country park. These should be a priority to redress the balance following the considerable overdevelopment of housing.

Typical 'nothing' statement. Speaks volumes but says little. Not exactly rushed 'improving the public realm' in the past have you?

Initiatives to seed verges with wildflowers. Electric charging points.

Stop supporting initiatives that reduce trees (outside Barclays, moving planted trees in Manor Park, tree on entrance to old leisure centre)

This is a unity; countrywide agreed strategies are required, so we work in tandem, rather than as a small community. Too wide an aim to achieve as an individual, small community.

Why does this questionnaire have to be so formal? The Millennium Park could have trees and benches with a path to push buggies and wheelchairs around. Don't cut the grass verges so often, give wildflowers a chance. When new housing estates are built include a grass park with trees.

Some events aimed at school children regarding the local environment would be welcomed i.e. child visits to woods/moors, etc., on an educational basis.

Lots more dog poo bins needed around the town.

How will this be achieved? What will it look like? More dog bins. Stop Council staff smoking out the Rufus Centre offices? Not a good model to follow.

AN ENGAGED COMMUNITY

39 comments:

Engagement required with young people to a greater degree.

The need for community focus and engagement, council should support any ideas that come to them with view of getting Flitwick's community involved.

Difficult to include the younger generation if not given direction whilst at school and also involve parents.

We need more community events like the carnival

It is crucial to get children and young people involved and accommodated, to reverse the increasing disaffection and anti-social behaviour by a minority.

Make the town accessible for wheelchair users

Support all areas of the community

Engagement is lacking.

Is it possible to have a statue of Professor Flitwick from Harry Potter books outside the station?

Tesco is too much the prevailing experience in Flitwick - more could be done to create a vibrancy about the 'centre' as a destination - nice food stalls and market stalls in the empty area outside Barclays Bank would be a starting point. An independent coffee van might bring people in...

Make it safer with more of a presence of police officers

You'll need to actually listen to your residents if you want to develop more of a community spirit. So far all I've seen is incompetence.

Some of your councillors are so disjointed from reality engaging in their own beliefs and not of the people

The Central Local plan to build on the fields opposite the old Leisure Centre should be opposed at every level. ALL those fields been a valuable escape during lockdown, any building on those will effect the water table for remaining crops. Also, as the schools and doctors are full (you cannot get a doctors appointment at the best of times) we should not be building any more housing estates because of this.

Voluntary youth groups need more than just Leases by way of support

Poor facilities

Do as you have been promising for years, developing the town centre and creating open areas for people. We are all so let down by the council doing nothing other than spend money on proposals that never go through that the community are apathetic to any proposals from the council

More community events throughout the year

This is very much needed, and to be welcomed, given past practices of failing to adequately engage with electorate on key issues

Please ensure this includes young people and meets their needs so that we prevent the common issues often faced by communities where bored and disillusioned people cause difficulties for others

More restaurants etc, nightlife to provide a vibrant town centre

Oh do me a favour - folks want to be left alone to get on with their own life

Activities and engagement for teenagers not just guides and cubs

The Town Council have driven local business away from Christmas lights, to pizza shops. This is a place to live not to be a community.

More opportunities for folks to become engaged, encourage businesses and organisations to run and support their events as well as TC events. Advertising in FLITWICK papers for businesses in FLITWICK should be minimal , many are small and this advertising helps them build, perhaps the “exchange” could be taking part in a TC event or even promoting one or running one to aid the community.

Continue to improve play areas, to include swings and roundabouts for children in wheelchairs. Provide more areas for teenagers to gather, including them in discussions, to reduce the amount of anti social behaviour. Provide more benches, community gardens etc

Oh come on, of course this is a standard dream. Unachievable of course due to public indifference and just wanting to be left alone to get on with their own lives.

Actions such as litter picking should continue. Open Gardens scheme. Litter bins in streets. Trees and flowers planted in street sites.

Brilliant work with Christmas lights and Halloween events etc. Embrace that we are more diverse than Ampthill & stand in our own right.

All age groups? Flitwick is fast becoming a retirement town. The age groups from 16 to 30 seem to be missed out. Lots of different things for the over50s to do as long as you have money. Activities for under 16yrs. What about a tenpin bowling alley?

Where are we at now? We might all be very proud now!!

Keep up the good work. Already achieved.

Get rid of The Beach and make the village hall site attractive for use as a social hub.

A COUNCIL THAT DELIVERS

Utilise the wealth of talent, capability and skills within the community before engaging outside resource. This can also assist in community engagement.

How will you know when councillors will be developed in the skills required? What are the skills required? Surely some councillors should already have the skills and experience required? May need revising as it doesn't instill confidence.

An awful lot to deliver.

Actions speak louder than words.

A council that listens to the public, rather than driving its own agenda and dismissing the opinions of others is essential. The current council is not approachable and does not seem to care about other views.

Not enough collaboration.

How would anyone not support that objective?

Yes please - and is accountable. Communication with the local community on progress and plans is important to build trust and that sense of pride in the local area.

It will be better to focus on one or two major projects and deliver than start several and not deliver any.

Again, this will be a tall order...

You couldn't deliver a newspaper.

Bigger surgery, which includes health centre and physio etc.

Same promise with no action.

Appropriate training of staff and Councillors very important in gaining trust and achieving engagement.

Yes, it really isn't doing this currently with any of its projects.

Councillors should be held to account and all should engage with the wishes of the town

Agree for officer training. Pointless for councillors.

Engagement with your businesses, groups and schools - talk to them - go visit them see what helps them what they needs. FLITWICK TC is well placed for putting people in touch with each other, building relationships, seeing a need and addressing it.

Agree if this applies to Officers, as for Councillors, not a chance.

More information put out generally e.g. noticeboard at Village Hall not just Tesco.

Excellent.

Would hope that this aim is a pertinent part of job interview!

A decent newsletter each month.

Keep it simple!! Do we really need KPI's for the essential services provided by Flitwick Town Council??
Relative to need. The Lord Mayor of London perhaps, Mayor of London yes, Flitwick needs to deliver but does not need this level of management claptrap which echoes around Whitehall and multi-national boardrooms.

How are you going to 'deliver' on a limited budget, with inexperienced persons, small committees and 75% of Flitwick residents not committed?

MCM
July 2021

Corporate Services Financial Summary YTD

01 April - 30 June 2021

	Income	Budget	% Budget Achieved		Expenditure	Budget	% Budget Spent	
Corporate Services	£ 440,861	£ 869,743	51%		£ 218,321	£ 485,268	45%	GREEN

Supporting reports included alongside this report:

- Rialtas Income and Expenditure Report for Corporate Services

Items of note

- Projects relating to the Rolling Capital Fund are currently captured within Corporate Services. Going forward this will be reported elsewhere.
- Overspend in Office and IT Equipment (4025/101) relates to purchase of laptops and equipment for remote working provision.

Rufus Centre Report

01-30 June 2021

Please find below a proposed reporting format to present financial information included within the Income and Expenditure reports. This may be superseded by Power BI reporting in due course.

		01-30 June 2021		2021/22 Year to date								Comments
		Income	Expenditure	Income	Budget	% Budget Achieved		Expenditure	Budget	% Budget Spent		
1178/101, 4001/101, 4003/101, 4033/101	Staff Costs	£ 209	£ 22,156	£ 209	£ -	N/A		£ 61,233	£ 237,228	26%	Green	
4102/101	Office Space Rent	£ -	£ 3,133	£ -	£ -	N/A		£ 9,398	£ 37,590	25%	Green	
4022/101, 4023/101, 4040/101, 4056/101	Contracts & Licenses ¹	£ -	£ 2,159	£ -	£ -	N/A		£ 9,992	£ 40,700	25%	Green	
1003/101, 4009/101, 4020/101, 4021/101, 4025/101, 4026/101, 4059/101, 4146/101	Administration Costs ²	£ 6	£ 3,898	£ 22	£ 500	4%		£ 8,816	£ 14,250	62%	Green	
1143/102, 4025/102, 4035/102, 4143/102, 4210/102, 4501/102, 4502/102	Civic Expenses inc TM Charities	£ 139	£ 33	£ 475	£ -	N/A		£ 48	£ 4,700	1%	Green	
1001/103, 4024/103, 4028/103, 4045/103, 4046/103	Communications	0	£ 1,934	£ -	£ 2,000	0%		£ 1,934	£ 12,700	15%	Green	
1176/111, 1190/111	Precept	0	£ -	£ 427,122	£ 856,243	50%		£ -	£ -	N/A	Green	

Detailed Income & Expenditure by Budget Heading 30/06/2021

Month No: 3

Corporate Services Committee

	Actual Current Mth	Actual Year To Date	Current Annual Bud	Variance Annual Total	Committed Expenditure	Funds Available	% Spent	Transfer to/from EMR
CORPORATE SERVICES								
101 ADMINISTRATION								
1003 PHOTOCOPIES	6	22	500	478			4.5%	
1178 COVID 19 FURLOUGH SUPPORT	209	209	0	(209)			0.0%	
ADMINISTRATION :- Income	215	232	500	268			46.3%	0
4001 SALARIES AND WAGES	22,156	61,233	235,978	174,745		174,745	25.9%	
4003 VEHICLE - MILEAGE	0	0	250	250		250	0.0%	
4009 HEALTH & SAFETY	0	0	500	500		500	0.0%	
4020 POSTAGE	0	0	2,500	2,500		2,500	0.0%	
4021 PRINTING/STATIONERY	123	676	5,000	4,324		4,324	13.5%	
4022 PHOTOCOPIER CONTRACT	341	499	7,000	6,501		6,501	7.1%	
4023 TELEPHONES	543	1,907	10,000	8,093		8,093	19.1%	
4025 OFFICE & IT EQUIPMENT	3,728	5,894	3,000	(2,894)		(2,894)	196.5%	
4026 EQUIP.MAINTENANCE	0	0	250	250		250	0.0%	
4031 MEETING REFRESHMENTS	0	0	200	200		200	0.0%	
4033 RECRUITMENT COSTS	0	0	1,000	1,000		1,000	0.0%	
4040 IT SUPPORT	836	4,827	21,000	16,173		16,173	23.0%	
4056 SUBSCRIPTIONS/ LICENCES	439	2,759	2,700	(59)		(59)	102.2%	
4059 SUNDRIES	0	8	250	243		243	3.0%	
4102 Rent Receivable/Payable (Inter	3,133	9,398	37,590	28,193		28,193	25.0%	
4146 Business Continuity - Library	47	2,238	2,750	512		512	81.4%	
ADMINISTRATION :- Indirect Expenditure	31,346	89,439	329,968	240,529	0	240,529	27.1%	0
Net Income over Expenditure	(31,131)	(89,207)	(329,468)	(240,261)				
102 CIVIC EXPENSES								
1143 TOWN MAYOR CHARITIES INCOME	139	475	0	(475)			0.0%	
CIVIC EXPENSES :- Income	139	475	0	(475)				0
4025 OFFICE & IT EQUIPMENT	0	0	100	100		100	0.0%	
4035 REGALIA FUND	0	0	400	400		400	0.0%	
4143 TOWN MAYOR CHARITIES COSTS	33	48	0	(48)		(48)	0.0%	
4210 TOWN MAYOR ALLOWANCE	0	0	2,000	2,000		2,000	0.0%	
4501 HONORARY CITIZENS	0	0	200	200		200	0.0%	
4502 ELECTIONS/BI-ELECT.	0	0	2,000	2,000		2,000	0.0%	
CIVIC EXPENSES :- Indirect Expenditure	33	48	4,700	4,652	0	4,652	1.0%	0
Net Income over Expenditure	106	427	(4,700)	(5,127)				

Detailed Income & Expenditure by Budget Heading 30/06/2021

Month No: 3

Corporate Services Committee

	Actual Current Mth	Actual Year To Date	Current Annual Bud	Variance Annual Total	Committed Expenditure	Funds Available	% Spent	Transfer to/from EMR
103 COMMUNICATIONS (BJ)								
1001 NEWSLETTER ADVERTISING	0	0	2,000	2,000			0.0%	
COMMUNICATIONS (BJ) :- Income	0	0	2,000	2,000			0.0%	0
4024 INFORMATION PACKAGES	0	0	200	200		200	0.0%	
4028 ADVERTISING	0	0	500	500		500	0.0%	
4045 NEWSLETTER PRINTING/DISTRIBUTI	1,934	1,934	10,000	8,066		8,066	19.3%	
4046 WEBSITE	0	0	2,000	2,000		2,000	0.0%	
COMMUNICATIONS (BJ) :- Indirect Expenditure	1,934	1,934	12,700	10,766	0	10,766	15.2%	0
Net Income over Expenditure	(1,934)	(1,934)	(10,700)	(8,766)				
110 PROJECTS								
1177 GRANTS RECEIVED	(1,340)	13,032	11,000	(2,032)			118.5%	
PROJECTS :- Income	(1,340)	13,032	11,000	(2,032)			118.5%	0
4215 PROJ - Flit Valley Walk RCF	800	800	2,000	1,200		1,200	40.0%	
4801 PROJ - Rendevous Air Con RCF	0	0	7,865	7,865		7,865	0.0%	
4802 PROJ - The Hub Refurb RCF	0	0	20,000	20,000		20,000	0.0%	
4803 PROJ - Manor Park Heritage RCF	1,350	4,850	28,000	23,150		23,150	17.3%	
4804 PROJ - Gym Equipment RCF	0	0	11,000	11,000		11,000	0.0%	
4806 PROJ - Wildflower Meadows RCF	0	1,465	0	(1,465)		(1,465)	0.0%	
4807 PROJ - Rufus Centre Refurb RCF	0	4,870	0	(4,870)		(4,870)	0.0%	
5013 Trs to Rolling Capital Fund	0	126,900	126,900	0		0	100.0%	
5014 Funding from R C P	(2,150)	(11,985)	(57,865)	(45,880)		(45,880)	20.7%	
PROJECTS :- Indirect Expenditure	0	126,900	137,900	11,000	0	11,000	92.0%	0
Net Income over Expenditure	(1,340)	(113,868)	(126,900)	(13,032)				
111 NON SERVICES								
1176 PRECEPT RECEIVED	0	427,122	854,243	427,121			50.0%	
1190 INTEREST RECEIVED	0	0	2,000	2,000			0.0%	
NON SERVICES :- Income	0	427,122	856,243	429,121			49.9%	0
Net Income	0	427,122	856,243	429,121				
CORPORATE SERVICES :- Income	(986)	440,861	869,743	428,882			50.7%	
Expenditure	33,313	218,321	485,268	266,947	0	266,947	45.0%	
Movement to/(from) Gen Reserve	(34,299)	222,540						

Detailed Income & Expenditure by Budget Heading 30/06/2021

Month No: 3

Corporate Services Committee

	Actual Current Mth	Actual Year To Date	Current Annual Bud	Variance Annual Total	Committed Expenditure	Funds Available	% Spent	Transfer to/from EMR
Grand Totals:- Income	(986)	440,861	869,743	428,882			50.7%	
Expenditure	33,313	218,321	485,268	266,947	0	266,947	45.0%	
Net Income over Expenditure	(34,299)	222,540	384,475	161,935				
Movement to/(from) Gen Reserve	(34,299)	222,540						