

Flitwick papers

December 2020



Flitwick Town Council
The Rufus Centre
Steppingley Road
Flitwick
Bedford
MK45 1AH



Wishing you all a Merry Christmas & Happy New Year!

 **01525 631900**

 **01525 631903**

 **info@flitwick.gov.uk**

 **www.flitwick.gov.uk**

 **/FlitwickTC**

 **@NewsFTC**

What's Inside:



Flitwick Festive Fun

Remembrance Events

Manor Park Plan

Christmas Outdoor Market

Contents

Your Local Representatives page 2

Town Council Meeting News page 3

New Town Councillor page 4

Free Meals For Children Over Christmas Holidays page 4

Flitwick Festive Fun Competition. page 5

Remembrance 2020page 6

Manor Park Management Plan page 8/9

Outdoor Christmas Market page 10

Christmas Trees With a Difference page 10

The Rufus Centre. page 12

What Do They Do? - Flittabus page 14

Calling Greensand Champions! page 15

Community Notices page 16

Your Local Representatives

Flitwick Town Councillors

Ward	Name	Contact
E	Keith Badham	630868
W	Ian Blazeby	634585
W	Jeremy Dann	713751
W	Paul Dodds	07841 908862
W	Patricia Earles	07929 638404
E	James Gleave	07958 350159
E	Mike Halligan	Contact TC Office
E	Ann Lutley	712837
W	Gareth Mackey	712537
W	Martin Platt	713017
E	John Roberts	716360
E	Russ Shaw	07784 867921
W	Andy Snape	07590 572440
W	Dan Toinko	01525 649992
W	Clare Thompson	07734 866479
W	Maureen Williams	714714



Flitwick Town Council deal with; Allotments, burial ground, grants, environmental improvements, events and activities, play areas, Youth Hub, parks and open spaces, Flitwick Manor Park and The Rufus Centre.

Central Bedfordshire Councillors

Neil Bunyan	0300 300 8512
Charles Gomm	0300 300 8522
Gareth Mackey	712537

Central Bedfordshire Council deal with; Environmental Services, Grants, Grass Cutting, Highways, Industrial Estates, Planning, Recreation and Leisure, Refuse Collections, Litter Clearance, Recycling, Amenity Areas, Education, Libraries, Archives, Social Services, Street Lighting, Trading Standards, Traffic Management and Youth Services.

Telephone 0300 300 8000

The Town Council is delighted to welcome James Gleave as a new Councillor for the East Ward. Councillor Gleave was co-opted at the Town Council meeting on 17th November. We had five residents in total put themselves forward for co-option and would like to thank them all for their interest.

Ward Members reported that they are chasing Central Bedfordshire Council Officers on timescales for the step free access and interchange projects for Flitwick Station and, as soon as we have more news, we will share it with you.

If you need help or advice during these difficult times please get in touch and we will do our best to help if we can or connect you to the right people to assist you.



On behalf of the Mayor, Councillors and all the staff at Flitwick Town Council we wish you a very Merry Christmas and a Happy New Year!



The Town Council offices will be closed on Christmas Eve and will reopen on Monday 4th January 2021.

Rendezvous Cafe & Bar will be open over the Christmas period:

Christmas Eve	8am - 2pm
29th & 30th December	8am - 4pm
New Year's Eve	8am - 2pm
2nd January 2021	8am - 2pm

Town Council Diary



Committee Meetings continue to take place online via Zoom.

Please visit www.flitwick.gov.uk or email Deputy Town Clerk via stephaniestanley@flitwick.gov.uk for joining instructions.

December

1st	Community Services	7.45pm
10th	Business Services	7.45pm
15th	Corporate Services	7.45pm
17th	Planning	7.45pm
22nd	Extra Full Council	7.45pm

January 2021

The dates for Council meetings in 2021 will be confirmed and published before the end of the year on our website:

www.flitwick.gov.uk

Members of the public are welcome to attend any of the Council meetings.

New Councillor Joins FTC

We're pleased to welcome James Gleave as a new Councillor for the East Ward. James was co-opted to Flitwick Town Council at the Town Council meeting on 17th November.

Councillor Gleave has lived in Flitwick since he got married 16 years ago. Commenting on his co-option Councillor Gleave said: "I care about where the town is going and its future. For 10 years I worked in Highways and Planning at Central Bedfordshire Council, and Bedfordshire County Council before that. I have seen for myself what communities that come together around a strong vision of the future can do in achieving lasting change in their areas. It is this experience that I will bring to the position of Councillor."



There is still a vacancy for a Town Councillor which is due to be filled by election. The original election date was suspended due to Covid-19. This vacancy will be publicised when a new date for the election is issued by Central Bedfordshire Council.

Free Meals For Children Over Christmas Holidays

Over the Christmas school holidays, Flitwick Town Council will be supporting Flitwick families who rely on free school meals by providing a cooked meal for children under 16.

A similar scheme provided support for families during the October half term and FTC have decided to offer support again over Christmas.

All meals will be freshly prepared by staff at the Rendezvous Café & Bar at The Rufus Centre. Meals need to be pre-ordered and will be available for collection from Monday 21st to Thursday 24th December and Tuesday 29th to Thursday 31st December inclusive.

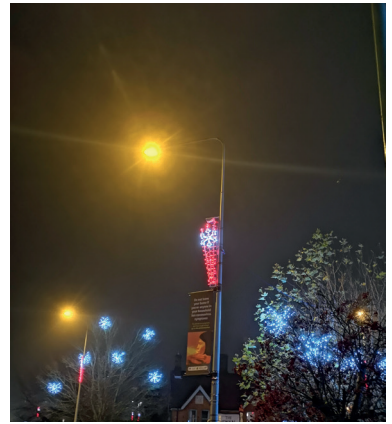
If you would like to request a meal for your child/children please send us a message via Facebook to our Rendezvous Café & Bar Facebook page. If you are not on social media you can give us call on 01525 631900.

This scheme is aimed at families that are genuinely in need. If you know of anyone in Flitwick who would benefit from this support please ask them to get in touch.

Christmas Lights Shine Bright

The new red and white Christmas Lights Display magically lit up the town on Sunday 29th November. Special thanks go to Barclays Bank, Boness Vets, the Bumble Bee, the Co-op and Tesco for providing the power supply to the lights this year.

Our plans for a Big Switch On event were put on hold sometime ago due to Covid-19 restrictions, but we will be planning a special event next year so that we can make the Switch On event a night residents get-together and celebrate the start of the festive season. Look out for news on how you can get involved with the planning for this in the New Year.



Flitwick Festive Fun

It's Competition Time!

Flitwick Festive Fun is a new competition which celebrates Christmas displays in shops, schools, community group buildings and at individual addresses in the town.

There are awards for the Best Window and Best Outdoor Display for residents to enter, and Best Shop Front, School or Community Group Building.

To enter simply upload your photos to our website, www.flitwick.gov.uk, send via our Facebook page or email to susaneldred@flitwick.gov.uk. If you can't enter by any of these methods please call us on 01525 631900. All entries will go on display on a photo gallery on our website for all to enjoy. Closing date for entries is midnight on **13th December**.

The top three entries from each category chosen by our judging panel will go to a Facebook poll running from **16th December to 20th December** inclusive so that everyone can vote for their favourite. The winner in each category will receive £100 to donate to their favourite charity plus a trophy to keep!

We will producing an interactive map on our website plotting all of the entries so that you can take a walk around the town and see the wonderful displays brightening up Flitwick this Christmas.



Remembrance

Remembrance this year was very different due to COVID-19. The town paid its respects in many different ways including a livestream Remembrance Service, community groups laying wreaths individually between Remembrance Sunday and Armistice Day, and the Royal British Legion holding a short ceremony at the War Memorial at 11am on the 11th November. Beautiful painted stones were laid by community groups and individuals at the War Memorial and at Flitwick Parish Church.





HELP IS OUT THERE!

Do you need help with shopping?

Transport to appointments?

Need a prescription collecting?

Or just a friendly voice to chat to?

WE ARE HERE TO HELP

The scheme is coordinated by local agencies, including:
Ampthill & Flitwick Good Neighbours, Flitwick Town Council,
Local Churches, Central Bedfordshire Councillors and
Mental Health group, The Forum - Busy Getting Stronger.

Please Call: 07833 314903

Manor Park Management Plan

Flitwick Town Council has approved a scheme to carry out further fencing on the paddocks surrounding Manor Park to improve the management of wetland grass.

Manor Park is maintained in line with a Natural England Stewardship Scheme. The Stewardship Scheme, which provides funding towards the maintenance of the park, requires grassland in the paddocks to be managed and improved. Introducing additional fencing will allow more cattle to graze the grassland surrounding the park.

Cattle are the best and recommended way to manage wetland grass. Cattle grazing helps maintain the structure and composition of wildlife habitats upon which a variety of plants and animals depend for their survival.

The Limousin-cross cattle grazing in Manor Park in the summer did a great job of working their way through the rough vegetation creating clearings across the whole paddock. They will return again in the Spring.

Work will be undertaken to move any trees or saplings that were previously planted or have self-set in the area. The trees and saplings will be carefully moved a few metres from their current location and will also be used to infill some gaps in the surrounding hedges.

September to March is the best time to carry out the moving and replanting of trees and the work is planned to be completed by the end of January 2021.

The Town Council is working together with Greensand Country Landscape Partnership to produce a Parkland Management Plan with the view of carrying out further improvements to Manor Park in the future to improve the park for visitors which includes:

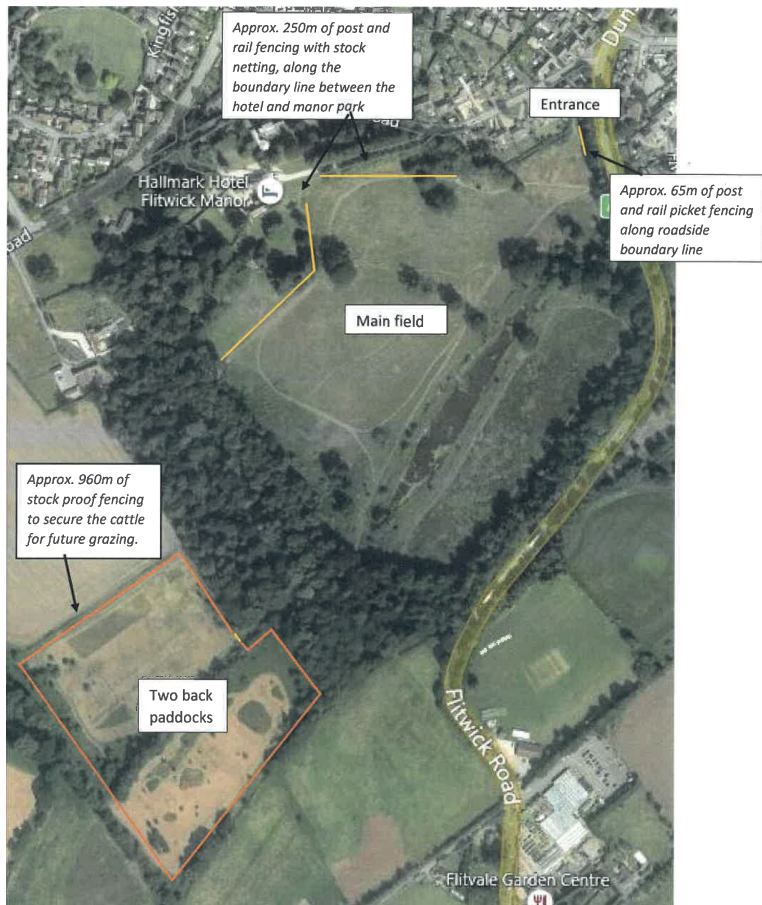
- Tree planting in woodland – involving scrub removal to allow space for ornamental tree planting
- Repair of ornamental bridge
- Rhododendron control in woodland
- Repair main entrance gate piers; rehang gates, and replace associated metal railings
- Renovate pavement area surrounding main gates
- Interpretation board inside of main gates explaining 'designed parkland landscape.'

The Council will also be investigating the work required to drain the lake to restore it to its former glory.

You can keep up to date with what's going on at Manor Park by visiting our website www.flitwick.gov.uk



Proposed Fencing In Manor Park



Get Ready For Outdoor Christmas Market

On **Sunday 13th and Sunday 20th December** we will be holding the first ever Flitwick Outdoor Christmas Market. We had more planned but due to lockdown restrictions the markets planned for earlier in the November had to be cancelled.

The good news is that we will be running the two markets between 10am and 2pm on each day. There will be a great range of gifts and produce available - perfect for Christmas presents or for a treat for yourself!

For more information please contact Susan Eldred on 01525 631900 or email susaneldred@flitwick.gov.uk

A festive poster for the Flitwick Christmas Market. At the top, a string of colorful Christmas lights hangs against a dark blue background. Below this, a white rectangular box contains the text 'FLITWICK CHRISTMAS MARKET' in bold red letters. Underneath, the dates 'SUNDAY 13TH DECEMBER' and 'SUNDAY 20TH DECEMBER' are listed. To the left is a cartoon illustration of Santa Claus carrying a large sack, and to the right is a snowman wearing a top hat and scarf. The text 'Open: 10am - 2pm' is prominently displayed in red. Below this, the location 'FLITWICK VILLAGE HALL - CAR PARK, DUNSTABLE ROAD, FLITWICK, MK45 1HP' is given. A note states 'In line with COVID current Government guidance'. At the bottom, it says 'Christmas Shopping with Local Produce & Gifts' and 'FREE ENTRY'. Social media icons for Facebook and Twitter are shown, along with the website 'www.flitwick.gov.uk' and contact information for Susan Eldred.

**FLITWICK
CHRISTMAS MARKET**

SUNDAY 13TH DECEMBER
SUNDAY 20TH DECEMBER

**Open:
10am - 2pm**

FLITWICK VILLAGE HALL - CAR PARK
DUNSTABLE ROAD, FLITWICK, MK45 1HP

In line with COVID current Government guidance

Christmas Shopping with Local Produce & Gifts

FREE ENTRY

Organised by Flitwick Town Council
For more information: 01525 631900 or susaneldred@flitwick.gov.uk
www.flitwick.gov.uk

Christmas Trees With A Difference

If you are visiting The Rufus Centre over the Christmas period please make sure you take a look at the special Community Christmas Trees in the foyer that have been made by the members of the Stitchers group, and friends from the town and surrounding villages.

Created from hundreds of individually crafted squares of knitted, crocheted, felt and square fabric, we received so many beautiful squares we were able to create two trees.

A big thank you to everyone who has contributed to the project.

We would like to specially thank Scott Lister for making the wooden frames for the trees.





Competition Time!

Be part of the first ever...

FLITWICK FESTIVE FUN

Brighten up your street by entering our new competition
Be in with a chance of winning **£100** for your chosen charity ...

Categories:

**Best Shop Front, School or
Community Group Building**

Best Window

Best Outdoor Display



Organised by Flitwick Town Council

For more information: 01525 631900 or susaneldred@flitwick.gov.uk



@NewsFTC



/FlitwickTC

www.flitwick.gov

The Rufus Centre

Christmas magic has started to sprinkle across The Rufus Centre as the team welcomed guests to this year's Santa Experiences on 5th December. Santa's Grotto and Breakfast with Santa on the 12th and 19th December are now all sold out and we are looking forward to enjoying the festive spirit as we countdown to Christmas.

Rendezvous Café & Bar

We were delighted to be able to finally reopen The Rendezvous Café & Bar on Wednesday 2nd December. Now we are in Tier 2, the rules are different for dining in which means that you can only sit inside the Café with members of your household or support bubble. The good news is we have plenty of outdoor seating if you want to visit with friends or family outside of your household/bubble. The rule of six applies in both cases.

On the menu we have a special Christmas Afternoon Tea, festive drinks and very tempting homemade individual Christmas cakes!

During the second lockdown, the Café offered a full takeaway service which proved very popular. We now have a new online ordering system making it even easier for people to order their favourite food and drinks.

You can view the range of menus on the new Café section on our website www.therufuscentre.co.uk. The Café also has its own Facebook page where you can keep up to date with the latest news and special offers.

If you are stuck for Christmas present ideas we have Rendezvous Café & Bar Gift Vouchers available - perfect for someone who is tricky to buy for. You can choose the value - simply pop in or call us to purchase on 01525 631900.



Tel: **01525 631905**

Email: bookings@therufuscentre.co.uk



[/TheRufusCentre](https://www.facebook.com/TheRufusCentre)

[/WeddingsAtTheRufusCentre](https://www.facebook.com/WeddingsAtTheRufusCentre)



[@RufusCentreFTC](https://twitter.com/RufusCentreFTC)

The Rufus Centre



Meet, Work, Celebrate

www.therufuscentre.co.uk

VIRTUAL OFFICE SPACE - COME AND JOIN US

We are all working to a new normal and with many businesses based from home we are now offering the opportunity to use The Rufus Centre as a business address. A physical office is not always needed but the credibility of using a well-established business address with many additional features can only enhance your business opportunities. Have a Virtual Office at The Rufus Centre and you will benefit from:



- Business address at one of the county's leading meeting, conference and events venue.
- Holding post until collection.
- 10% discount on meeting room hire - choice of seven rooms suitable for 2 to 200.
- Rendezvous Café & Bar on site - friendly environment to meet clients.
- Promotion of your business on The Rufus Centre's website and on Flitwick Town Council website's Flitwick Business Directory - if you want us to!
- Friendly, professional staff.
- Ample free car parking.
- Covid-19 secure setting.



Virtual Office Space at The Rufus Centre Just £40 per month plus VAT

We're ready for when you're ready!

Tel: **01525 631905**
Email: bookings@therufuscentre.co.uk

www.therufuscentre.co.uk



 [/TheRufusCentre](https://www.facebook.com/TheRufusCentre)
[/RendezvousCafe&Bar](https://www.facebook.com/RendezvousCafe&Bar)

 [@RufusCentreFTC](https://twitter.com/RufusCentreFTC)

What Do They Do?

Flittabus, along with many others, has been impacted by the unforeseen events brought to us in 2020. With the help of Central Bedfordshire Council, amongst others, we have been able to adapt our buses and our working practices to be safer for our drivers and passengers and to recommence the operation of three of our services.

Flittabus

This has provided a much-needed lifeline and opportunity to buy essentials to people in most of the villages we serve. We will continue to assess demand for other services, and any suggestions for new services via messages on our website, flittabus.co.uk, or to our helpline, 07960 388111. As soon as it is safe to do so, and legislation allows, we will also recommence our very popular excursions and private hire facility, again available to all.

Please visit our website, or message us on Facebook, to find out more about us, our services and how we can help you. Our most recently introduced routes were because of just that. We would love to hear from you if you have any stories of how you have used Flittabus, have pictures of old buses, maybe you were a driver or you have a business we serve with one of our routes. We would love to know what, and assist if we are able.

More than 30 unpaid volunteers run and drive Flittabus Community Transport Ltd - a non-profit making, self-financing operation providing scheduled bus services, available to all, in local communities, mainly, within Central Bedfordshire, six days per week.

Services stretch from Hitchin to MK and Toddington to Bedford. Anyone who is interested in joining our band of volunteer drivers can get in touch via the website flittabus.co.uk or the Helpline - we'd love to hear from you!

In the meantime, stay safe and thank you for riding with us, Flittabus!



Calling Greensand Champions!

The Greensand Trust in partnership with Greensand Country is putting the "Green into Greensand" and looking for Greensand Champions - groups or individual young people who are doing something amazing for the Greensand Country environment. We'd love to hear what young people are doing and give them the recognition they deserve as our 'Greensand Champions'.



Our aim is to celebrate positive environmental action, support the achievements of those young people doing great work and challenge ourselves and others to do more - together we can really make a difference and help improve our local environment.

What's a Greensand Champion?

A Greensand Champion could be, for example, someone who:

- Offers ongoing support for a local environmental group or cause
- Undertakes proactive habitat enhancement in the Greensand Country landscape area taking action against climate change
- Understands, campaigns and shares information relating to the unique Greensand Country landscape and its vulnerability to climate change and other factors

General Award Categories

Anyone from Greensand Country can become a Greensand Champion - entries are open in the following three categories:

- Individuals aged 10 and under
- Individuals aged 11 – 18yrs
- Groups e.g. schools, uniformed groups, youth groups

One overall winner will be chosen in each category by a panel of judges and named as Greensand Champion overall winners in March 2021.

Applications or nominations for the 2020 Greensand Champions scheme must be submitted by end January 2021. If we feel you are a Greensand Champion we'll send you a Greensand Champion digital certificate.

You'll also join the Greensand Champions digital 'Hall of Fame' which we hope will inspire others and the first 100 applicants will be able to collect a free Greensand Champions seed bomb as a reward (you will be notified).

You can nominate yourself or someone you know by completing the form available at www.greensandtrust.org

(Article sent in by The Greensand Trust)

Community Notices

Flitwick Singers Virtual Concert

Wednesday 9th December

Flitwick Singers are pleased to announce details of our very first Virtual Christmas Concert in aid of our charity Parkinson's UK. Members of the choir have continued to meet using Zoom, working hard over these last few months, learning old and new versions of familiar carols and we will be performing a choral world premiere of a Christmas hit from a few years ago.

To be able to watch the choir perform, you will need to book a space using the link to the concert.

<https://www.trybooking.co.uk/VGW>

There will be readings and songs from the choir, and you will be able to join in with the congregational carols in the usual way but in the comfort of your own homes.

When you book in, there is a space to add a donation to Parkinson's UK in lieu of a ticket.

If you have any questions about the event, please email flitwicksingershk@gmail.com.



Follow the Christmas Star

18th to 20th December

Why not follow this very special trail of 12 fabulous window displays to enjoy, all with that special Christmas feel.

'Follow the Star' round Flitwick ends with the nativity at St Peter and St Paul's Church. You can find out more about the trail by visiting our website www.flitwickchurch.org, our Facebook Page @FollowTheStarFlitwick, or by picking up a leaflet at St Peter and Paul's, Church Road, Flitwick from 7th December onwards.

Find all the starry windows and have a chance to win a prize!

The event will run from 18th to 20th December and will follow COVID Safe Guidelines.

Flitwick Scouts to 'Race Round The World'

Beavers, Cubs and Scouts at Flitwick Scouts have returned to virtual meetings via Zoom following guidance from the National Youth Agency. The Group had managed to return to face to face meetings where they put procedures in place to ensure people were social distancing. Many children were able to participate in activities such as muddy walks in the woods, toasting marshmallows over open fires, wide games and working towards their Sports Enthusiast or Athlete Badges. Some of the Scouts even managed to squeeze in a pizza tasting evening.



Unfortunately the Group was not able to participate in the usual Remembrance Day Parade and service. Not to be deterred, children made poppies at home and learned about why Remembrance Day is so important. On Remembrance Sunday, many children and adults stood for the two minute silence on their doorstep. Scout Leader Simon Baldwin and his children Kaleb and Evelyn attended the war memorial and laid wreaths on behalf of their Beaver Colony and Cub Pack.

One activity planned by The Scouts is to get members across the Country to 'Race round the World'. The teams are being led by Scout Ambassadors, Steve Backshall, Helen Glover, Tim Peake, Ellie Simmonds, Ed Stafford, Saray Khumalo, Dwayne Fields and Megan Hine. Families can choose whether they want to walk, run, skateboard, scoot, swim, cycle or canoe.

This activity is also helping the young people gain their International Badge as they are being encouraged to find out about other countries around the world, including customs, cultures, food, population, languages they speak, etc. Some of the children are also trying food from different Countries.

Several families are using this activity as an opportunity to get some healthy exercise. The children are using the activity to count towards their Hikes Away, Cyclist, Outdoor Skills Challenge and Time on the Water Badges. Many of the children are being sponsored by family and friends to help raise money for Scout Groups across the Country that are in danger of closing.

Aiden MacNeil said: "At Scouts, we learn life skills and we want to raise money for vulnerable groups so they don't have to shut down and the children in the Group can continue to learn life skills."

Adult Volunteer Darren Reeve said: "Racing Round the World is a great opportunity for Scouts to put the 'help other people' part of the Scout promise into action. I'm certain many of the families will walk many miles not only to get some exercise but to earn some badges and to help other Scouts around the Country."

For further information about Flitwick Scouts, please visit www.flitwickscoutgroup.org.uk/

(Article sent in by Flitwick Scouts)

Get In Touch

You can call us on
01525 631900 or
email:
info@flitwick.gov.uk



Look inside for details of the
Flitwick Festive Fun competition
where you can win £100 for your
favourite charity!

FLITWICK CHRISTMAS MARKET

SUNDAY 13TH DECEMBER

SUNDAY 20TH DECEMBER

Open:
10am - 2pm



FLITWICK VILLAGE HALL - CAR PARK
DUNSTABLE ROAD, FLITWICK, MK45 1HP

In line with COVID current Government guidance

Christmas Shopping with Local Produce & Gifts

FREE ENTRY