

Flitwick papers


April/
May 2019



Flitwick Town Council
The Rufus Centre
Steppingley Road
Flitwick
Bedford
MK45 1AH



Beautiful view of the rapeseed contrasting with the bluebells taken from Flitwick Woods across the fields to Steppingley by Sharon Long

 **01525 631900**

 **01525 631903**

 **info@flitwick.gov.uk**

 **www.flitwick.gov.uk**

 **/FlitwickTC**

 **@NewsFTC**

What's Inside:

Millennium Park New Play Area

Carnival News

Flittabus Community Transport

Fun Dog Show

Contents

Your Local Representatives

Town Council News

Town Council Diary

What's Been Happening?

New Play Area For Millennium Park

Classic Car & Bike Show

Fun Dog Show.

The Rufus Centre.

Carnival News

Local Organisation Notices

What Do They Do?

See The Signs - Save A Life

page 2

page 3

page 3

page 4

page 5

page 6

page 7

page 8

page 10

page 12

page 14

page 16

Your Local Representatives

Flitwick Town Councillors

Ward	Name	Contact
E	Janet Blakeman	712078
W	Ian Blazeby	634585
E	Mark Bonner	Contact TC Office
W	Jeremy Dann	713751
E	Patrick Feerick	Contact TC Office
E	Ann Lutley	712837
W	Gareth Mackey	712537
W	Martin Platt	713017
W	Keith Quantrill	715904
E	John Roberts	716360
W	Michael Sheehan	Contact TC Office
W	Dan Toinko	Contact TC Office
W	Phillip Thompson	720582
W	Maureen Williams	714714

Flitwick Town Council deal with; Allotments, burial ground, grants, environmental improvements, events and activities, play areas, Youth Hub, parks and open spaces, Flitwick Manor Park and The Rufus Centre.

Central Bedfordshire Councillors

Name	Contact
Fiona Chapman	290177
Charles Gomm	712328
Andrew Turner	752670

CBC deal with; Environmental Services, Grants, Grass Cutting, Highways, Industrial Estates, Planning, Recreation and Leisure, Refuse Collections, Litter Clearance, Recycling, Amenity Areas, Education, Libraries, Archives, Social Services, Street Lighting, Trading Standards, Traffic Management and Youth Services.

Telephone 0300 300 8000

Tuesday 16th April

A representative from Cemetery Development Services attended the Flitwick Town Council meeting. Councillors were given a presentation on the new Burial Ground and Country Park Project.

A planning application is to be submitted for both elements – the Burial Grounds and the Country Park. This should be submitted to Central Bedfordshire Council in May 2019.

Phase 1 will provide 60-70 years of burial ground. This is a much needed project for Flitwick.

We hope to have the new Burial Grounds for Autumn 2020.

Local Elections

We have received our nominations for our Elections for West Ward in Flitwick. This will take place on Thursday 2nd May with results confirmed on 3rd May. Don't miss your opportunity to vote.

Annual Town Meeting



As part of the Annual Town Meeting Bedfordshire Police & Crime Commissioner, Kathryn Holloway hosted a Q & A session with the audience to answer resident's questions and address their concerns regarding crime in Flitwick.

PC Aaron Dagley from your local community policing team was also in attendance.



Town Council Diary

All meetings listed are held at the Rufus Centre unless stated otherwise

April

25th	Planning Committee	7.45pm
------	--------------------	--------

May

9th	Business Services	7.45pm
-----	-------------------	--------

16th	Planning Committee	7.45pm
------	--------------------	--------

21st	Town Council	7.45pm
------	--------------	--------

29th	Corporate Services	7.45pm
------	--------------------	--------

June

5th	Community Services	7.45pm
-----	--------------------	--------

6th	Planning Committee	7.45pm
-----	--------------------	--------

13th	Business Services	7.45pm
------	-------------------	--------

18th	Town Council	7.45pm
------	--------------	--------

27th	Planning Committee	7.45pm
------	--------------------	--------

What's Been Happening?

Fantastic Response to Poppy Art Project

Thank you to everyone who got in contact regarding the Poppy Art project. We have been overwhelmed with the response and have already had some beautiful knitted and crocheted poppies handed in for the project.

We were delighted to see so many people at The Big Knit at the Village Hall collecting the poppy patterns and wool. We have also sent patterns to people who were unable to attend but want to take part in the project.

There's an extra Big Knit session being held on **Friday 21st June** between 9am and 11.30am at the Village Hall. Call Zoe Putwain on 01525 631900 for more information.



Discover Dinosaurs Workshop

Children had a great morning going back in time at the Discover Dinosaurs Workshop with Teaching Talons in the Easter holidays. All enjoyed a hands on experience with a range of animals, birds and insects and spent time comparing them to extinct, pre-historic creatures. Some fantastic dinosaur artwork was also produced during the fun morning at The Rufus Centre.

Look out for news of more children's activities planned in the summer holidays.

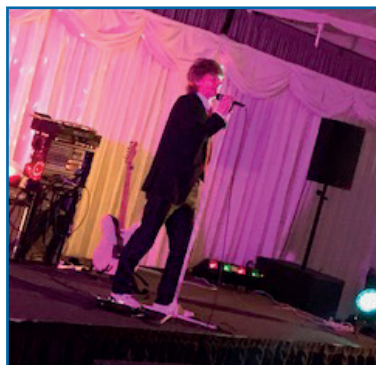


Rocking Rod Stewart Tribute Night

Music and dancing were on the menu at the Rod Stewart Tribute Night at The Rufus Centre earlier this month

The audience were treated to a medley of songs from Rod Stewart's catalogue of hits from over the decades.

The next tribute evening in the calendar is Michael Jackson on **11th October** with the ever popular Dan Hadfield as Gary Barlow returning to The Rufus Centre on **6th December** for the second time!



New Play Area for Millennium Park

A new 'Flitwick Castle' complete with a dry moat, a 25m Cableway and Launch Ramp and a Twin Ring Sky Carousel are just some of the new play equipment being installed in the Millennium Park Play Area in the coming weeks.

The whole area is having a complete upgrade with a range of exciting play equipment suitable for 1 to 15 year olds.

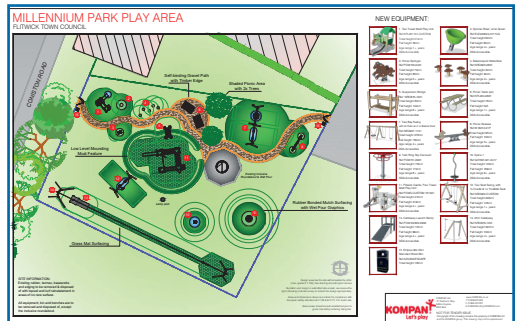
Residents attending the Annual Town Meeting at the beginning of April were able to take a sneak preview of the plans shown below.



Work is scheduled to start on Monday 29th April for approximately four weeks.

Look out for updates on progress on Flitwick Town Council's Facebook page as the transformation takes place.

We can't wait to see the new Millennium Park Play Area in action for all to enjoy - perfect timing with summer on its way!



Flitwick Business Group is open to all local businesses and welcomes new members. For more information and to pre-register for the next meeting on **Thursday 16th May** please visit www.flitwickbusinessgroup.co.uk.

Classic Car & Bike Show - Registrations Now Open

Last year's Flitwick Classic Car & Bike Show drew the crowds from all over the county and beyond.

We are now getting ready for this year's show which takes place on **Sunday 4th August** on The Rufus Centre field between 12 noon and 4pm.

If you would like to exhibit your classic car or bike you need to pre-book to guarantee entry. Exhibitor arrival is between 10.30am and 11.30am on the day.



To request an exhibitor booking form please email reception@flitwick.gov.uk or call 01525 631900.

Here's hoping for another glorious, sunny day like we enjoyed at last year's event!

Come and Have Your Say

Central Bedfordshire Council is running, with Right Track, a series of events designed to engage with people with learning disabilities to hear about their feedback and how they think services could be improved.

The next session is taking place at The Rufus Centre on **Monday 29th April** between 1.45pm and 5pm.

If you know anyone who would be interested please encourage them to pop along, there is no need to book.

Article sent in by Central Bedfordshire Council

Flitwick Town Council
presents...



FUN DOG SHOW

2019

Supported by
Pets at Home: Bedford



Sunday 12th May

The Rufus Centre, Flitwick MK45 1AH

Open 11.30am

First Class Starts 12 noon

£2.50 per class, per dog

Visitor Entry 50p

Free Parking . Stalls . Refreshments

**All proceeds to the Town Mayor's
Charities (The Hope Programme &
Hospitality Action) and Animals in Need**

Tel: 01525 631900

www.flitwick.gov.uk



/FlitwickTC



@EventsFTC

10 Classes:

- Prettiest Bitch
- Loveable Puppy
- Best Pedigree
- Prettiest Eyes
- Young Dog Owner
(Over 5 yrs)
- Handsomest Dog
- Best Crossbreed
- Over 8 years
- Waggiest Tail
- Best Rescue

**All Class Winners
into Best in Show!**



/FlitwickTC



@NewsFTC

The Rufus Centre

We have had another busy month with functions at The Rufus Centre.

As every event is different it gives us a chance to transform the Lockyer Suite into a fantastic wedding venue and party space.

We hosted a wedding breakfast and evening reception for a lovely couple, Precious and Izaak. The Lockyer Suite was beautifully decorated, including the use of our ceiling canopy and sparkly backdrop curtain. 120 guests were treated to a traditional African and Caribbean wedding breakfast, and were entertained with a wonderful mix of sounds from their chosen DJ. It was a pleasure to host such a lovely couple and their extended family and friends.

Increasingly popular for children's parties, the Lockyer Suite offers plenty of room for party games, arts and crafts and even bouncy castles. We recently welcomed 30 excited children who were entertained by Dinky Ducks Soft Play and Entertainments. Our in-house catering team prepared party food boxes (pictured right) with all the children's favourites and unlimited juice for all the younger guests to enjoy.



Conferences & Meetings

The convenience and flexibility of The Rufus Centre means that we have many clients who book our meeting rooms, conference and exhibition facilities on a regular basis. This month, however, is exceptional as we were delighted to be the venue for The Mind, Body & Soul Fair for the incredible eighteenth year running!

We received some fantastic feedback from the organisers after the event too:

"Just to say thank you for your lovely venue. We had a fantastic weekend and a great turnout of visitors. Many thanks to the girls and guys for all their help over the weekend; great support for us as always."

June Dickerson

Reiki Sounds Therapies, Training & Events

Tel: **01525 631905**

Email: Bookings@therufuscentre.co.uk



[/TheRufusCentre](https://www.facebook.com/TheRufusCentre)

[/WeddingsAtTheRufusCentre](https://www.facebook.com/WeddingsAtTheRufusCentre)



[@RufusCentreFTC](https://twitter.com/RufusCentreFTC)

The Rufus Centre



Meet, Work, Celebrate

www.therufuscentre.co.uk

Comedy Night
with
Britain's Got Talent
Finalist
Steve Hewlett

Plus Special Guests

Carl Charlesworth, Elroy Welsh & Paul Revill



**"Your scripts are so witty and your
Ventriloquism is incredible"**

David Walliams
Britain's Got Talent

Box Office
01525 631900

Eventbrite
(booking fee applies)



Organised by
Flitwick Town Council

**The
Rufus
Centre**

Flitwick
MK45 1AH

Friday
17th
May

Arrive 7pm
7.30pm Start

Tickets £18
Including Buffet
Over 18s only
Must pre-book

Bar Available



www.flitwick.gov.uk

Saturday 8th June - Don't Miss This Fantastic Community Event

We're now in full swing with the preparations for Flitwick Carnival and we can't wait for the day to arrive.

Prepared to be amazed at our arena acts this year - showing strength, determination and sheer craziness.

Three times winner of UK's Strongest Man and 5th in the World's Strongest Man competition, Adrian Smith's 'Mighty Smith' show will captivate the audience as he demonstrates his incredible strength including a vehicle pull and carrying a member of the audience on a chair with his teeth!



It's going to be a two wheel frenzy with the Xtreme Stunt Team featuring GB gold medal winner Dan Clark and World Cycle Trials cyclist James Bancroft. With Dan on his motorbike and James on his cycle it's a man against machine event with plenty of comedy aspects to the show.

You can even go head to head with ferrets in a special Ferret Fun Race in Ferretworld's mini arena.

To round off the evening, performing on the music stage will be popular Flitwick band The Authentics.



Are you faster than a ferret? Take on the Ferretworld challenge!

There's still plenty of opportunities for local businesses and organisations to get involved with Flitwick Carnival.

Stalls are available at Millennium Park. If you are a local organisation or charity you can book a pitch for just £15. Traders pitches cost £40.

Call Susan on 01525 631900 or email carnival@flitwick.gov.uk.

Thank You To Our Sponsors!

Thank you to the local companies who sponsor Flitwick Carnival. If you are interested in becoming a sponsor please get in touch.



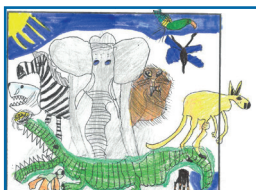
Congratulations Freya!

Well done to 8 year old Freya Pearson, from Flitwick Lower School, who is this year's winner of the design a front cover for the carnival programme competition.

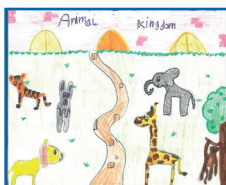
The judges had a very difficult task on their hands as the standard of entries was so high and imaginations had run wild with the 'Animal Kingdom' theme.

Freya was awarded a certificate, a laminated picture of her design and a bumper craft box. Thank you to the sponsors of the competition Rebecca L Faret Solicitors.

 Rebecca L Faret
Solicitors



Second place: Josie Downing



Freya's winning design



Third place: Lily Campbell

Flitwick Carnival

Football Tournament

at The Rufus Centre
Steppingley Road, Flitwick, MK45 1AH

**6-A-Side Teams
Boys & Girls
FREE**

**Sunday
2nd June
from 8:30am**

Age Groups:
Lower School (can be mixed teams) Years 1&2, 3&4
Middle School (boys and girls sections) Years 5&6, 7&8

All you need to do is:
Get a group of friends, ask an adult to be your manager, design your own kit, choose a team name & submit an entry form!

Deadline for entry forms are Friday 17th May.
Entry forms available from The Rufus Centre, your school office or online via www.flitwick.gov.uk/flitwick-carnival.html.

Organised in partnership:




For more details call Susan on **01525 631900**
Email: carnival@flitwick.gov.uk

Team Registration
Lower School 8.30am
First Game 8.45am
Middle School 11.30am
First Game 12.00noon
* All Subject to change

**Prize for Best Kit
Refreshments
Ice Cream**

FLITWICK TOWN COUNCIL PRESENTS...

Flitwick Carnival

SATURDAY 8TH JUNE 12 NOON - 7PM

THE MILLENNIUM PARK
DUNSTABLE ROAD, FLITWICK, MK45 1HP

PARADE LEAVES THE RUFUS CENTRE AT 11.15AM

Parade Route: Rufus Centre - Steppingley Road - Dunstable Road - Temple Way

Xtreme Stunt Team, Adrian Smith - three times
UK's Strongest Man, Ferret World & lots more!

Live Music from 4pm - 7pm
For more details call **01525 631900**

The perfect family day out!

**Spectacular
Arena Acts**

**Bus
Bar**

**Fun
Fair**

ANIMAL KINGDOM THEME!

FREE Entry



You can keep up-to-date with the latest carnival news by visiting our Flitwick Carnival Facebook page.

Local Organisation Notices

CHUMS Charity & Kids in Action Midsummer Day Ball

Friday 21st June from 7pm

Riverside Suite, Venue 360, Luton

Tickets £55 inc.

drink on arrival & three course meal

Entertainment from Joe Corrigan &
Signature Swing

Dress Code: Black Tie. Raffle & Auction

<http://buytickets.at/chumscharity/231377>

Contact CHUMS 01525 863924 or

Kids in Action 01582 477762

Flitwick Library

Simon Michael, Crime Author

17th May from 7.00pm

Tickets available from the library or
call 0300 300 8057

Mid Beds Flower Club

Thursday 9th May at 7.45pm

Flitwick Village Hall

Practical Evening

*Bring a bunch of supermarket flowers and
foilage and see what you can make*

£6.00 - Visitors Welcome

Contact: Marion Tucker - 01234 742396

Flitton Flits Family Fun Runs

Monday 6th May - Bank Holiday

Time to get yourself fit for a great run
around Flitton & Flitwick Moors over a
flat, cross-country route.

Entry forms at local pubs or visit

<http://flittongreenfield.bedsparishes.gov.uk>

Contact David Sedgley - 01525 714961

St Peter & St Paul's Church 'The Quintessential British Summer Fete'

Monday 27th May

12.30-3.30pm

*Bring a chair for Pimms and
Jazz on the Lawn*

Afternoon Teas, BBQ, raffle, games,
tombolas, tower tours, a Teddy Skydive
Challenge and more....

Adult entrance 50p

All proceeds to Flitwick Church

Flitwick Village Hall Committee AGM

Tuesday 30th April at 7.30pm

Everyone welcome to attend

Flitwick Health Walkers

For more details or to request a programme
contact Roy on 01525 715730/07866 446131

Dunstable Downs

Wednesday 8th May - 10.15am

Meet at Chilterns Gateway Centre

Flitwick Woods

Wednesday 15th May - 10.15am

Meet outside Flitwick Library

Flitwick - Via The Mount & Pussy Pond

Wednesday 22nd May - 10.15am

Meet outside Flitwick Library

Woburn Woods

Wednesday 29th May - 10.15am

Meet at Longslade Lane Car Park

All walks are approx 1.5 hours

**Wildlife Trust
Bird Walk with Steve Halton on
Flitwick Moor**

Saturday 11th May at 10am

Steve will lead the group to identify even the most hidden birds at this unique Wildlife Trust reserve & SSS1.

Limited to 20 places - Please book your place. £2 per adult.

Contact: flitvale.info@gmail.com or ring Ann on 075801 78889 between 6 and 8pm or at weekends.

Bedford Organ & Keyboard Club

Present Popular Organist

Andrew Nix in Concert

Wednesday 29th May

7.30pm - 10.00pm

Refreshments/Bar/Raffle

Members £5 Non-Members £6

Contact: 01234 344423 - at Addison Centre, Kempston, MK42 8PN

Flitwick 10K

Congratulations to all the runners who took part in the Flitwick 10k on Sunday 14th April.

Photo: Steve Hewitt



Movement to Music

Tuesdays 11.45am to 12.45pm

Flitwick Village Hall - from 7th May

A fun and friendly dance class

for the over 65s

£5 - Refreshments included

Contact: Hannah on 07714 378887 or email hannah.imaginationarts@yahoo.com

Willen Hospice

Willen Hospice has opened a new shop in Church Street, Amptill. Donations welcome.



Scouts Are Challenged!

All of the sections at Flitwick Scout Group have been working towards various challenge and activity badges. The Beavers visited the Buddhist Temple near Willen Lake in Milton Keynes as part of their Faith badge. The activities they undertook included some chanting and playing drums. They also did some "shrinkable art" when they made keyrings to give as gifts for Mothers Day. They have also been learning knots and the Beaver Promise in sign language.

Navigation was one of the highlights for the Cub Scouts. This included using a map and writing out some instructions for others to follow around Flitwick. They have also done some string printing and splatter painting finding inspiration from Jackson Pollock!

The Scouts have made and used ballistas, had a wide game in Flitwick Woods, been on an evening hike, played some drums and made a meal using just one pan.

Plans for their weekend Group camp being held at Bromham in June are well under way with over 110 children looking forward to the adventure. Their six day summer camp, being held at Thriftwood, Brentwood in Essex has over 40 children attending. The camp will give all of the children the opportunity to participate in several different adventurous activities.

For more information on Flitwick Scout Group visit www.flitwickscoutgroup.org.uk



What Do They Do?

Flittabus

Flittabus COMMUNITY TRANSPORT LIMITED

Since 1985 Flittabus has been running scheduled bus services in and around Flitwick.

Flitwick residents can make use of our weekly services to Bedford town centre and market on Wednesdays, or our Thursday services to Tesco and Ampthill town centre. Once a month (the 4th Tuesday of the month) we run a very popular service to Milton Keynes.

The bus routes are designed to provide services to shops and town centres from locations not well served by other bus companies. The service is aimed at all ages, but especially those who find it difficult to walk from main bus routes with heavy shopping. Our friendly drivers try to be flexible with pick-up and drop-off points. Detailed timetables are available from the library or on our website; www.flittabus.co.uk.

Flittabus also runs a variety of interesting excursions throughout the year. Details of these can be found on our website, on posters displayed on the buses or by asking our drivers. Some very popular recent trips have been to Blenheim Palace, The Florence Nightingale Museum in London and the Thriplow Daffodil Weekend.

We can also provide a hire service with a driver to local groups, including providing transport on behalf of Flitwick Town Council for their monthly 'Over 60s Lunch Club'. Hirers may be able to provide their own drivers only if the organisation to which they belong is licensed (Section 19 permit). Call the Hire Line on 07563 170 067 for details.

More than 30 unpaid volunteer drivers run Flittabus Community Transport Ltd.; a non-profit making, but self-financing operation providing services to local communities and new volunteers are always welcome.

The volunteers not only drive the three minibuses six days a week, but they also run the business, which is financed by fares, charitable gifts and grants from local authorities, including Central Bedfordshire Council, Flitwick Town Council and Parish Councils.

If you have some time to spare and would like to volunteer as a Flittabus driver please get in touch.

For more information on the different Flittabus routes, our excursion programme or copies of timetables please call 07960 388111 or visit our website www.flittabus.co.uk



A Sense of Awe & Wonder

The mind-blowing magic show
by Martin Rees & David Days



A magical journey through the 5 senses,
ending with a World Record attempt!

Friday 20th September

The Rufus Centre, Flitwick, MK45 1AH

Tickets: £18 including Hot Food (Must pre-book)

Doors Open: 7pm



Organised by Flitwick Town Council

Box Office: 01525 631900



Hello Ampthill

Come and visit our brand new boutique style shop to buy quality high street fashion or donate your pre-loved goods.

Shop • Donate • Volunteer



01525 838016



Church Street, Ampthill, MK45 2EH



www.willen-hospice.org.uk/findashop



Willen Hospice
always there to care

Registered charity number 270194

See the Signs - Save A Life



Flitwick Town Council is supporting the 'See the Signs, Save a Life' campaign - a Bedfordshire, Luton and Milton Keynes based campaign to encourage everyone to recognise the signs of someone who is experiencing suicidal thoughts and know what action to take to support them.

Acknowledging that 1 in 5 of people will experience suicidal thoughts some time in their life, local councils along with partners from the Bedfordshire and Luton Suicide Prevention Group are undertaking a social media campaign, providing printed materials and offering training to the local community around how to see the signs of suicidal risk.

The information centres on the signs to look out for and how to help. It also encourages people not to be afraid to ask directly about suicide.

For further information please visit:

www.centralbedfordshire.gov.uk/mental-health

Article sent in by Central Bedfordshire Council

Central
Bedfordshire





Rebecca L Faret
Solicitors

UNHAPPY RELATIONSHIP?

We can help you understand your options and support you through the legal process.

We are a small, friendly and approachable team of family lawyers specialising exclusively in matrimonial and family law. We provide first class, practical legal advice for all aspects relating to family law, including divorce and separation, and financial disputes and settlements, to include advice on pensions and complex assets. We also deal with disputes concerning unmarried couples.

Our 30 minute consultation (£50) will outline your options and we also offer a fixed fee divorce.



01525 712112 | rlfaret.co.uk

1 The Avenue, Flitwick, Bedfordshire, MK45 1BP

The Rufus Centre

Meet, Work, Celebrate

A Venue for Funeral Receptions

From the moment you arrive

Telephone: 01525 631905

www.therufuscentre.co.uk



CARE VISITS AT HOME

Good Old Fashioned Service

Call our professional team on
01525 713389

www.bluebirdcare.co.uk

Guttering Problems?

- Gutters cleaned
- Leaking gutters repaired
- New guttering fitted

All by a friendly, local established company

Call Rob on
01525 552066
or
07977 206403



G & R. Lee (P) LTD

MEMORIALS

. NEW MEMORIALS .
. NEW INSCRIPTIONS .
. RENOVATION .
07855 064577 (Richard)

www.leememorials.co.uk

www.flowerstones.co.uk

STRONG
FITNESS
achieve goals hit targets

nrpt
NATIONAL REGISTER
OF PERSONAL TRAINERS



Helping to achieve your goals with one
to one personalised fitness programmes
for all ages in a private gym environment

01525 755290

07929 372905

strong.fitness@ntlworld.com

celebrating 10 years
10
YEARS
celebrating 10 years



www.strongfitness.co.uk

Haseldine Funeral Service Ltd.

"Compassionate care when you need it most"

Independent Family Funeral Directors
with Over 16 Years Experience

Cremations - Burials - Green Burials
Private Chapel of Rest - Flowers
Headstones - Pre Paid Funeral Plans
Home Arrangements - Personal Service
24 Hour Service



Open Pricing via
www.haseldines.co.uk

Golden
Charter

192 High Street, Cranfield, MK43 0EN

Tel: 01234 757529

MOWER DEALS! **TORO**

LANDSCAPE and ARBORIST
SUPPLIES & SERVICE FOR 25 YEARS

COME TO THE EXPERTS!



STUART BROWN
Landscape & Arborist Supplies
01525 841842
www.stuart-brown.co.uk

New Road, Maulden, Bedfordshire, MK45 2BG UK

NEVILLE
FUNERAL SERVICE
Established 1875

Reassurance when you need it most





Neville Funeral Service
The Old Church Flitwick Road
Amphill MK45 2NT
t: 01525 406132
e: amphill@nevillefuneralservice.com
www.nevillefuneralservice.com

LAPTOP & COMPUTER

Server, Printer, Apple, Set-up,
Repairs, Data Recover, Internet,
Wireless, Network, Virus Infection
Home/Office Computer Problems
Services from £40
Your local IT support, 7 days a week
We Visit You
No Fix - No Fee
Qualified, Experienced.
pclaprepairs@gmail.com
01525 306316 - 07925 338435

Garage Door Solutions Ltd
For a fast Friendly Reliable Local Service



- All makes & designs available
- 24 Hour repair service
- No call out charge
- All work guaranteed
- Free Quotations
- Automation

Sectional - Roller-Up and Over-Side Hinged-GRP-ABS Plastic-Timber

Office: 01525 721615 Mobile: 07761093468
Website: www.garagedoorsolutionsltd.co.uk
E-mail: gds.ltd@ntlworld.com

Advertising Space Available

*Flitwick Papers advertising space is sold
on a first come, first served basis with
external businesses occupying
25% of the publication.*

For more details contact:
Beverley Jones on 01525 631900
or email:
beverleyjones@flitwick.gov.uk



Sunday 28th April
The Rufus Centre
Steppingley Road, Flitwick, MK45 1AH
Open 8am - 12noon
£1 Entry

For more information contact: susan@flitwick.gov.uk or 01525 681900
All proceeds going to Christmas Lights Appeal 2019

Car Boot Sale

FREE PARKING REFRESHMENTS

Organized by Flitwick Town Council



What's On

For more details on anything advertised here please call 01525 631900

All events on this page are held at **The Rufus Centre** unless stated otherwise
www.flitwick.gov.uk

Look inside for details on the Comedy Night, Fun Dog Show, Carnival Events and more.....



Forget Me Not Group

Monday 13th May

1.30pm - 3.30pm

Alzheimers Society

Transitional Dementia Support

The Forget Me Not Group is a group to support carers and people with memory problems or Dementia.

Come along for a cup of tea and a chat.

We welcome newcomers.

Football Tournament

Sunday 2nd June

Boys & Girls 6-a-side teams

See inside for full details

Car Boot Sale

Sunday 28th April

Early Bird Pitch £5 if you pre-book



Tea Dance with

Peter Rogerson

Thursday 9th May

Entry £4 (including refreshments)

Dances incorporate a mixture of Ballroom, Latin & Sequence steps on an excellent dancefloor. No need to book - just turn up!

Over 60's Lunch Club

PRE-BOOK EVENT ONLY

Friday 10th May at 12.30pm

£6.50 per person (Flitwick residents)

£7.50 per person (Non-residents)

Must pre-book!

Main Course

Salmon en croûte

New Potatoes & Green Beans

Dessert

Toffee Apple Crumble & Cream

Bingo Afternoons

Last Friday of each month at 2pm

Flitwick Village Hall - £1 per card